

Understanding the Size of the Government Spending Multiplier:

It's in the Sign*

Regis Barnichon

Federal Reserve Bank of San Francisco, CREI, CEPR

Christian Matthes

Federal Reserve Bank of Richmond

February 2018

Abstract

The literature on the government spending multiplier has implicitly assumed that an increase in government spending has the same (mirror-image) effect as a decrease in government spending. We show that relaxing this assumption is important to understand the effects of fiscal policy. Regardless of whether we identify government spending shocks from (i) a narrative approach, or (ii) a timing restriction, we find that the contractionary multiplier –the multiplier associated with a negative shock to government spending– is above 1 and even larger in times of economic slack. In contrast, the expansionary multiplier –the multiplier associated with a positive shock– is substantially below 1 regardless of the state of the cycle. These results help understand seemingly conflicting results in the literature.

JEL classifications: E62, C32

*We would like to thank Rudi Bachmann, Olivier Blanchard, Davide Debortoli, Emmanuel Fahri, John Fernald, Jordi Gali, Yuriy Gorodnichenko, Oscar Jorda, Peter Karadi, John Leahy, Sylvain Leduc, Karel Mertens, Nicolas Petrosky-Nadeau, Glenn Rudebusch, Adam Shapiro, Eric Sims, Paolo Surico, Silvana Tenreyro, Helene Rey, Dan Wilson, and numerous seminar participants for helpful comments. We thank Alexander Ziegenbein for superb research assistance. Barnichon acknowledges financial support from the Spanish Ministerio de Economía y Competitividad (grant ECO2011-23188) and the Barcelona GSE Research Network. The views expressed here do not necessarily reflect those of the Federal Reserve Banks of Richmond and San Francisco or the Federal Reserve System. Any errors are our own.

1 Introduction

Understanding the impact of changes in government purchases on output is a key part of fiscal policy analysis, and the question periodically takes center stage as economies move through stages of business and political cycles. The implementation of fiscal stimulus packages across OECD countries in the early phase of the 2008-2009 crisis spurred a lot of work on the size of the government spending multiplier associated with increases in government purchases.¹ A few years later, the mirror-image question –the effect of contractionary fiscal policy– became the center of attention as the rapid rise in government debt levels led to a swift shift to fiscal consolidation, particularly in continental Europe.² Unfortunately, despite intense scrutiny, the range of estimates for the government spending multiplier remains wide, with estimates lying between 0.5 and 2.

Perhaps surprisingly, the literature has so far treated the effects of government intervention symmetrically: a contractionary policy is assumed to have the same (mirror-image) effect as an expansionary policy, and the size of the multiplier does not depend on the *sign* of the government spending shock. However, with occasionally binding borrowing constraints, households' marginal propensity to consume (MPC) out of temporary income changes may be asymmetric, i.e., the MPC may depend on the sign of the change in income.³ Since the MPC is a key determinant of the size of the multiplier (e.g., Gali et al., 2007), asymmetry in the MPC raises the possibility of an asymmetric government spending multiplier.⁴

In this paper, we relax the assumption of symmetric government spending multipliers using a novel econometric procedure –Functional Approximation of Impulse Responses (FAIR)– that consists of directly modeling and estimating the economy's impulse responses to structural

¹See e.g., Hall (2009), Mountford and Uhlig (2009), Ramey (2009), Mertens and Ravn (2010), Uhlig (2010), Barro and Redlick (2011), Parker (2011), Ramey (2011, 2012a, 2012b), Auerbach and Gorodnichenko (2012, 2013), Bachmann and Sims (2012), Owyang, Ramey and Zubairy (2013) and Ramey and Zubairy (2016), Caggiano, Castelnuovo, Colombo and Nodari (2015), Caldara and Kamps (2017).

²See e.g., Alesina and Ardagna (2010), Guajardo, Leigh, and Pescatori (2011) and Jorda and Taylor (2016).

³Interestingly, Bunn et al. (2017) and Christelis et al. (2017) recently found evidence of asymmetric MPCs. For instance, Bunn et al. (2017) found evidence that the MPC out of negative income shocks is above 0.5 but that the MPC out of positive shocks is only about 0.1.

⁴This is easy to see in a basic Keynesian framework, where the spending multiplier is given by $1/(1-MPC)$ if interest rates are held constant. In a model with forward-looking rational agents, if some households cannot borrow more but can save more, the economy may behave in a more Ricardian fashion (and thus feature a smaller multiplier) following an increase in government spending (where households can save more to smooth the drop in permanent income caused by future higher taxes) than following a decrease in government spending (where financially constrained households cannot borrow more to consume out of their higher permanent income).

shocks. We find that treating separately expansionary and contractionary spending shocks is crucial to understanding the size of the government spending multiplier. The government spending multiplier is substantially *below* 1 for expansionary shocks to government spending, but the multiplier is *above* 1 for contractionary shocks. Importantly, we reach the same conclusions regardless of whether we identify government spending shocks from –(i) a narrative identifying assumption (Ramey, 2011, Ramey and Zubairy, 2016), or (ii) a recursive identifying assumption (Blanchard and Perotti, 2002, Auerbach and Gorodnichenko, 2012)–, which have been the two main approaches to identifying government spending shocks and their effects on the economy.

Our findings of an asymmetric multiplier are also robust to using a different econometric method –Local Projections (Jorda, 2005)–, using a longer sample period with historical data over 1890-2014, or using alternative identification schemes as in the works of Jorda and Taylor (2016) and Blanchard and Leigh (2013).

We then study to what extent the expansionary and contractionary multipliers depend on the state of the cycle at the time of the shock. In doing so, we expand a recent literature that reached conflicting conclusions on the effect of slack on the size of the multiplier: while studies based on narratively-identified shocks find little evidence for state dependence,⁵ VAR-based studies find that the multiplier is largest in times of slack.⁶ We find that the contractionary spending multiplier is state-dependent –being largest and around 2 in recessions–, but we find no evidence of state dependence for the expansionary multiplier –being always below 1 and not larger in recessions–. Thus, while Auerbach and Gorodnichenko (2012)’s findings have sometimes been interpreted as supporting the case for fiscal stimuli in recessions, our results caution against such a conclusion. We find no evidence that increases in government spending have larger multipliers during a recession (in fact, the multiplier is consistently below 1) and thus no support for stimulus programs in times of recession. However, we find that decreases in government spending during recessions have the largest multiplier, which suggests that austerity measures during recessions can be especially harmful.

Our results provide a simple explanation for the wide range of state dependence estimates reported in the literature: the relative frequency of expansionary and contractionary shocks differs markedly across the two main identification schemes. Results obtained from a narrative identifying assumption are driven primarily by positive shocks –unexpected *increases* in

⁵Owyang, Ramey and Zubairy 2013, Ramey and Zubairy 2016.

⁶Auerbach and Gorodnichenko 2012, 2013, Bachmann and Sims 2012, Caggiano et al. 2015, Fazzari, Morley and Panovska 2015.

government spending—, because the narratively-identified shock series (Ramey, 2011, Ramey and Zubairy, 2016) contains larger and more numerous positive shocks than negative shocks. As a result, narrative multiplier estimates mostly reflect the effects of positive shocks, which (according to our results) do not depend on the state of the business cycle. In contrast, the spending shocks identified in VARs are (by construction) evenly distributed between positive and negative values. As a result, the average multiplier is mildly state dependent, driven by the state dependence of the contractionary multiplier.

An important reason for the lack of studies on the possibly asymmetric nature of the government spending multiplier is methodological. Standard techniques are linear and make the exploration of non-linearities, in particular the asymmetric effect of spending shocks and their state dependence, difficult. In particular, structural VARs, as used by Blanchard and Perotti (2002) and Auerbach and Gorodnichenko (2012) cannot allow the impulse response function of a shock to depend on the sign of that shock.⁷ The narrative approach to government spending shocks, pioneered by Ramey and Shapiro (1998) and Ramey (2011), relies on Distributed Lags models (DL) or Local Projection (LP, Jorda, 2005), and these methods can allow for some non-linearities, as illustrated by Ramey and Zubairy (2016) and Auerbach and Gorodnichenko (2013) for state dependence. However, because of their non-parametric nature, these methods are limited by efficiency considerations, and simultaneously allowing for asymmetry and state dependence is difficult.⁸ Moreover, to explore the non-linear effects of shocks, DL or LP requires a series of previously identified structural shocks, which limits their use to narrative identification schemes.

To overcome these technical challenges, we use a new method—Functional Approximation of the Impulse Responses—, which consists in (i) directly estimating a structural moving average model of the economy, i.e., directly estimating the impulse response functions to structural

⁷Regime-switching VAR models can capture certain types of non-linearities such as state dependence (whereby the value of some state variable affects the impulse response functions), but they cannot capture asymmetric effects of shocks (whereby the impulse response to a structural shock depends on the sign of that shock). With regime-switching VAR models, it is assumed that the economy can be in a finite number of regimes, and that each regime corresponds to a different set of VAR coefficients. However, if the true data generating process features impulse responses that depend on the sign of the structural shock, a new set of VAR coefficients would be necessary each period, because the (non-linear) behavior of the economy at any point in time depends on the whole history of shocks up to that point. As a result, such asymmetric data generating process cannot generally be approximated by a small number of state variables such as in threshold VARs or Markov-switching models.

⁸Riera-Crichton et al. (2015) use Jorda’s local projection method to study the state dependent response of output growth to positive and negative government spending shocks. However because of efficiency considerations, they can only consider two states (expansion vs recession, whereas we use a continuous indicator of slack in the economy) and they must bring in additional information from cross-country data (30 OECD countries) while imposing that responses are the same across countries.

shocks (unlike the VAR approach, which first estimates a reduced-form VAR and thus requires the existence of a VAR representation),⁹ and (ii) approximating the (high-dimensional) impulse response functions with a (small) number of Gaussian basis functions, which offers efficiency gains and allows for the exploration of a rich set of non-linearities (in contrast to the non-parametric DL and LP approaches). While different families of basis functions are possible, Gaussian basis functions are particularly attractive for two reasons: (i) any mean-reverting impulse response function can be approximated by a sum of Gaussian basis functions, and (ii) a small number (one or two) of Gaussian functions can already capture a large variety of impulse response functions, and in fact capture the typical impulse responses found in empirical or theoretical studies. For instance, the impulse response functions of macroeconomic variables to government spending shocks are often found (or predicted) to be monotonic or hump-shaped (e.g. Ramey, 2011, Gali et al., 2007). In such cases, a single Gaussian function can already provide an excellent approximation of the impulse response function. Thanks to the small number of free parameters allowed by our functional approximation, it is possible to directly estimate the impulse response functions from the data using maximum likelihood or Bayesian methods. The parsimony of the approach in turn allows us to estimate more general non-linear models.

We introduced the FAIR methodology in Barnichon and Matthes (2017), but the present paper expands the methodology in a number of dimensions. Most notably, we propose a new fast and efficient impulse response estimator for cases where external instruments are available (e.g., from narrative accounts as in Ramey and Zubairy, 2016). The use of external instruments is the subject of intense interest in the literature, most recently in the form of Local Projections with Instrumental Variables (LP-IV, see Stock and Watson (2018) for a unified treatment). Our approach preserves the flexibility of LP-IV but improves efficiency from two separate angles: first by using a functional approximation of the impulse response, and second by effectively modeling the serial- and cross- correlation in the LP residuals. Finally, while Barnichon and Matthes (2017) only focused on the asymmetric effects of shocks, this paper extends the method to also allow for state dependent effects of shocks (e.g., state dependent multipliers).

Section 2 presents the empirical model, our method to approximate impulse responses using Gaussian basis functions and the two main structural identifying restrictions used in the liter-

⁹A promising approach related to ours is Plagborg-Møller (2016), who proposes a Bayesian method to directly estimate the structural moving-average representation of the data by using prior information about the shape and the smoothness of the impulse responses.

ature, Section 3 describes our asymmetric model and presents our results on the asymmetric effects of shocks to government spending as well as a number of robustness checks; Section 4 provides additional supporting evidence; Section 5 describes a model with asymmetry and state dependence, presents the results and discusses how the asymmetric effects of government spending shocks help reconcile the seemingly contradictory findings in the literature; Section 6 discusses how one might rationalize our empirical findings and provides avenues for future theoretical work, Section 7 concludes.

2 Empirical model

Our goal in this paper is to study how the size of the government spending multiplier, and more generally the effects of government spending on the economy, depend on the sign of the policy intervention and on the state of the business cycle at the time of the policy intervention.

Denoting \mathbf{y}_t a vector of stationary macroeconomic variables, we posit that the economy is described by the structural vector moving-average (VMA) model

$$\mathbf{y}_t = \sum_{k=0}^K \Psi_k(\boldsymbol{\varepsilon}_{t-k}, z_{t-k}) \boldsymbol{\varepsilon}_{t-k} \quad (1)$$

where $\boldsymbol{\varepsilon}_t$ is the vector of i.i.d. structural innovations with $E\boldsymbol{\varepsilon}_t = \mathbf{0}$ and $E\boldsymbol{\varepsilon}_t\boldsymbol{\varepsilon}_t' = \mathbf{I}$, K is the number of lags, which can be finite or infinite, z_t is a stationary variable that is a function of lagged values of \mathbf{y}_t or a function of variables exogenous to \mathbf{y}_t . Ψ_k is the matrix of lag coefficients –i.e., the matrix of impulse responses at horizon k –.

Model (1) is a *non-linear* vector moving average representation of the economy, because the matrix of lag coefficients Ψ_k , i.e., the impulse responses of the economy, can depend on (i) the values of the structural innovations $\boldsymbol{\varepsilon}$ and (ii) the value of the macroeconomic variable z : With Ψ_k a function of $\boldsymbol{\varepsilon}_{t-k}$, the impulse responses to a given structural shock depend on the value of that shock at the time of shock.¹⁰ For instance, a positive shock may trigger different impulse responses than a negative shock. With Ψ_k a function of z_{t-k} , the impulse responses to a structural shock depend on the value of z at the time of that shock. For instance, the impulse responses may be different depending on the state of the business cycle (e.g., the level of unemployment) at the time of the shock. For a data generating process like (1), there are two

¹⁰Note that our starting point is *not* a Vector AutoRegression (VAR). In a non-linear world where Ψ_k depends on the value of the shocks $\boldsymbol{\varepsilon}$ as in (1), a VAR representation may not exist, because inverting the VMA (to obtain a VAR representation) is generally not possible.

main routes to estimate the impulse responses to government spending shocks: (i) one possibility is to estimate the full VMA model (1) with some assumptions to identify the spending shocks, or (ii) another possibility is to use a series of independently identified government spending shocks (or instruments) in Local Projections or Distributed Lags regressions to directly estimate the impulse response functions.

In both cases however, the parameter space is large, and parameter proliferation quickly becomes a problem when one allows for non-linear effects like asymmetric and state dependent impulse responses. To shrink the dimension of the problem, we will use a new approach – Functional Approximation of Impulse Responses or FAIR (Barnichon and Matthes, 2017)–, which consists in approximating the impulse responses with parsimonious basis functions. In this section, we describe the intuition and rationale behind our functional approximations, and we show how we will use FAIR with the two main identification schemes in the government spending literature.

2.1 Functional Approximation of Impulse Responses (FAIR)

Since the intuition and benefits of a functional approximation can be understood in a linear context, this section introduces FAIR in a linear context, i.e., where $\Psi_k(\varepsilon_{t-k}, z_{t-k}) = \Psi_k$.

Denote $\psi(k)$ an element of matrix Ψ_k , so that $\psi(k)$ is the value of an impulse response function ψ at horizon k . A functional approximation of ψ consists in decomposing ψ into a sum of basis functions, i.e., in modeling $\psi(k)$ as a *basis function expansion* (see e.g., Hastie et al., 2009), with

$$\psi(k) = \sum_{n=1}^N a_n g_n(k), \quad \forall k \in [0, K] \quad (2)$$

with $g_n : \mathbb{R} \rightarrow \mathbb{R}$ the n th basis function, $n = 1, \dots, N$. Different families of basis functions are possible, and in this paper we use Gaussian basis functions and posit

$$\psi(k) = \sum_{n=1}^N a_n e^{-\left(\frac{k-b_n}{c_n}\right)^2}, \quad \forall k \in [0, K] \quad (3)$$

with a_n , b_n , and c_n parameters to be estimated. Since model (3) uses N Gaussian basis functions, we refer to this model as a functional approximation of order N .

While other families of basis functions are possible, Gaussian basis functions are particularly attractive in macro applications for three reasons: (i) parsimony, (ii) interpretability of the estimated parameters as summary features of the IRFs, and (iii) the possibility to allow for

non-linearities in a flexible yet parsimonious fashion.

To illustrate these points, Figure 1 shows a hump-shape impulse response parametrized with a one Gaussian basis function, i.e., using the approximation

$$\psi(k) \simeq ae^{-\frac{(k-b)^2}{c^2}}, \quad \forall k \in [0, K]. \quad (4)$$

For impulse response functions that are monotonic or hump-shaped, one Gaussian function can already provide a good approximate description of the impulse response. In other words, a one-Gaussian approximation can offer an “efficient” dimension reduction tool; reducing the number of parameters substantially (ψ is captured by only 3 parameters instead of K parameters for an unrestricted impulse response), while still allowing for a large class of impulse responses.¹¹

Moreover, as shown in Figure 1 the estimated coefficients in (4) have a direct economic interpretation in terms of features of the IRFs: parameter a is the height of the impulse-response, which corresponds to the maximum effect of a unit shock, parameter b is the timing of this maximum effect, and parameter c captures the persistence of the effect of the shock, as the amount of time τ required for the effect of a shock to be 50% of its maximum value is given by $\tau = c\sqrt{\ln 2}$. These a - b - c coefficients are considered the most relevant characteristics of an impulse response function and are generally the most discussed in the literature.

The parsimony and the interpretability of FAIR will be crucial to later allow for asymmetric or state-dependent effects of shocks in a parsimonious way.

2.2 The structural identifying assumptions

Models like (1) are under-identified without additional restrictions. To identify the effect of government spending shocks, the fiscal policy literature has followed two main approaches:¹² (i) a recursive identification scheme in a VAR, or (ii) a narrative identification scheme with Local Projections. In this paper, we will consider both alternatives, which is important to put our results in the context of the literature. For ease of exposition, we will discuss the two main identification schemes in a linear context, postponing the introduction of non-linear effects to the following sections.

¹¹Note the parallel with VAR models. The finite-order VAR(p) model that researchers estimate is only an approximation of the true VAR(∞). And similarly to VAR models, we will select the order of the FAIR model—the number of basis functions in the FAIR approximation—using an information criterion.

¹²See e.g., Perotti (2008) and Ramey (2011, 2012) for overviews of the main identification schemes used in the literature.

Identification from a recursive ordering: VMA-FAIR

The first identification scheme was proposed by Blanchard and Perotti (2002) and consists of a short-run restriction, i.e., a restriction on Ψ_0 , the matrix capturing the contemporaneous impact of a shock. Government spending is assumed to react with a lag to shocks affecting macro variables, so that in a system where \mathbf{y}_t includes government spending, taxes and output, government spending is ordered first and Ψ_0 has its first row filled with 0 except for the diagonal coefficient. This identification scheme was recently challenged because of anticipation effects (Ramey, 2011), as some innovations to government spending were found to be anticipated by agents. We thus follow Auerbach and Gorodnichenko (2012), who addressed the anticipation issue by augmenting the vector \mathbf{y}_t with a professional forecast of the growth rate of government spending in order to soak up the forecastable components of shocks to government spending.

Since we want to later allow for asymmetric and state dependent effects of shocks, we depart from the literature and do not estimate a structural VAR. Instead, we estimate a recursively-identified VMA-FAIR model, that is a VMA model like (1) where we approximate the moving-average coefficients –the impulse responses– with parsimonious functions. As we discussed in the previous section, the functional approximation shrinks the parameter space and make the estimation feasible. We leave the details of the estimation for the appendix, but in a nutshell the estimation boils down to the estimation of a truncated moving-average model (with a FAIR parametrization). The model can be estimated using maximum likelihood or Bayesian methods, and we recursively construct the likelihood by using the prediction error decomposition and assuming that the structural innovations are Gaussian with mean zero and variance one.

Identification from a narrative approach: SUR-FAIR

The second main identification scheme is based on a narrative approach and was proposed by Ramey (2011), building on Ramey and Shapiro (1998). In Ramey and Shapiro (1998), wars provide exogenous variations in government spending, because the entries into war (such as World-War II or the Korean war) (i) were exogenous to domestic economic developments, and (ii) led to large increases in defense spending. Generalizing this idea, Ramey (2011) identifies unexpected changes in anticipated future defense expenditures by using news sources to measure expectations and expectation surprises.

In this work, we do not assume that the narratively-identified shocks are exact measures of the true shocks. Instead, we only posit that the narratively-identified shocks proxy for the true

shocks with measurement error (independent of other structural shocks).¹³ Denoting $\{\hat{\varepsilon}_t^G\}$ the narratively-identified proxies for government spending shocks and $\{\varepsilon_t^G\}$ the true government spending shocks, we assume that

$$\hat{\varepsilon}_t^G = \alpha \varepsilon_t^G + \eta_t$$

with α a positive constant and η_t i.i.d measurement error.

With an external instrument for the spending shocks in hand, it is no longer necessary to estimate the full VMA model (1). Instead, we can directly estimate the impulse responses of interest using our proposed SUR-FAIR method that we describe next.

Denoting Y_t the variable of interest and G_t government spending, we estimate the model

$$\begin{pmatrix} Y_t \\ G_t \end{pmatrix} = \sum_{k=0}^K \begin{pmatrix} \varphi_Y(k) \\ \varphi_G(k) \end{pmatrix} \hat{\varepsilon}_{t-k}^G + \begin{pmatrix} u_t^Y \\ u_t^G \end{pmatrix} \quad (5)$$

with φ_Y and φ_G given by a functional approximation (3) and $\mathbf{u}_t = \begin{pmatrix} u_t^Y \\ u_t^G \end{pmatrix}$ the vector of residuals.

Model (5) is similar to a Distributed Lags model (DL) but with a few important differences: (i) the right-hand side variable is not the shock itself but an imperfect proxy $\hat{\varepsilon}_t^G$, (ii) the functions φ_Y and φ_G are approximated with basis functions (the FAIR approximation), and (iii) we allow the vector $\mathbf{u}_t = \begin{pmatrix} u_t^Y \\ u_t^G \end{pmatrix}$ to follow a VAR process with

$$\mathbf{u}_t = \mathbf{\Upsilon}(\mathbf{L})\mathbf{u}_{t-1} + \eta_t$$

with $\mathbf{\Sigma} = E\eta_t\eta_t'$ and $\mathbf{\Upsilon}(\mathbf{L})$ matrices to be estimated.

Since (5) is effectively a Seemingly Unrelated Regression (SUR) with a FAIR structure, we will refer to this model as a SUR-FAIR model. Given parameter estimates $\hat{\varphi}_Y$ and $\hat{\varphi}_G$, a SUR-FAIR estimate of the impulse response of Y is then

$$\hat{\psi}_Y = \frac{\hat{\varphi}_Y}{\hat{\varphi}_G(0)}.$$

Similarly to an instrumental variable approach, rescaling $\hat{\varphi}_Y$ with $\hat{\varphi}_G(0)$ –the impact re-

¹³In other words, we assume that the narratively-identified shocks are external instruments (in the sense of Stock and Watson, 2018) for government spending shocks.

sponse of G to a spending shock— allows us estimate the impulse response ψ_Y without the bias coming from measurement-error in $\{\hat{\varepsilon}_t^G\}$.¹⁴ Our approach is thus closely related to running Local Projections with Instrumental Variables (LP-IV, Stock and Watson, 2018), as used recently in Ramey and Zubairy (2016). However, there are two important efficiency advantages of estimating a SUR-FAIR model over LP-IV. First, FAIR imposes strong dynamic restrictions between the parameters of the impulse response function and thus can improve the efficiency of DL or LP. Second, the SUR nature of SUR-FAIR alleviates another source of inefficiency in DL/LP, namely correlation in the DL/LP regression residuals. In (5), u_t^Y and u_t^G are functions of the other structural shocks affecting the economy, so that they are likely both serially- *and* cross-correlated. Modeling \mathbf{u}_t with a VAR allows us to capture these correlations and improve efficiency. Ultimately, the efficiency gains offered by SUR-FAIR over LP-IV will be important when we augment the parameter space and allow for non-linear effect of shocks.¹⁵

2.3 Defining the government spending multiplier

We define the government spending multiplier as in Mountford and Uhlig (2009) and Ramey and Zubairy (2016), and we compute the “sum” multiplier

$$m = \sum_{k=0}^K \psi_Y(k) / \sum_{k=0}^K \psi_G(k) \quad (6)$$

where $\psi_Y(\cdot)$ and $\psi_G(\cdot)$ denote respectively the impulse response function of output (denoted Y from now on) and government spending (denoted G from now on) to a spending shock.

3 The asymmetric government spending multiplier

We now turn to studying the asymmetric effects of government spending shocks. We first describe how to introduce asymmetry in FAIR models, and then present the estimation results using (i) a recursive identification scheme à la Auerbach and Gorodnichenko (2012), and (ii) a narrative identification scheme à la Ramey (2011).

¹⁴We make this point more formally in the appendix.

¹⁵Another advantage of the SUR-FAIR approach is that the impulse responses can be estimated consistently even without stationary data. This is in contrast to estimates from vector moving-average models (as in the previous section) that do require stationarity of the data (Barnichon and Matthes, 2017).

3.1 Introducing asymmetry

Denoting ψ_i the impulse response function of variable i to a government spending shock, we allow for asymmetry by letting ψ_i depend on the sign of the government spending shock ε^G , i.e., we have the impulse response at horizon k satisfies

$$\psi_i(k) = \psi_i^+(k) \mathbb{1}_{\varepsilon_{t-k}^G > 0} + \psi_i^-(k) \mathbb{1}_{\varepsilon_{t-k}^G < 0}, \quad \forall k \in [0, K] \quad (7)$$

with $\mathbb{1}$ the indicator function and ψ_i^+ and ψ_i^- the impulse response of variable i to, respectively, positive and negative government spending shocks.

A one-Gaussian functional approximation of the impulse response function ψ_i^+ is then

$$\psi_i^+(k) = a_i^+ e^{-\left(\frac{k-b_i^+}{c_i^+}\right)^2}, \quad \forall k \in [0, K] \quad (8)$$

with a_i^+ , b_i^+ , c_i^+ parameters to be estimated. Although we anticipate our empirical application and only state the approximation with one Gaussian basis function, expression (8) can easily be generalized to any number of basis functions. A similar expression holds for $\psi_i^-(k)$.

We then denote m^+ the government spending multiplier (6) associated with a positive (expansionary) spending shock and m^- the multiplier associated with a negative (contractionary) shock.

3.2 Results from a recursive identification scheme

We first follow Auerbach and Gorodnichenko (2012), and we consider the vector $(\Delta g_{t|t-1}^F, g_t, \tau_t, y_t)'$ with g real government (federal, state, and local) purchases (consumption and investment), τ is real government receipts of direct and indirect taxes net of transfers to businesses and individuals, y is gross domestic product (in chained 2000 dollars), and $\Delta g_{t|t-1}^F$ is the growth rate of government spending at time t forecasted at time $t-1$. Following Gordon and Krenn (2010) and Ramey and Zubairy (2016), we ex-ante re-scale all variables by “potential output”, where potential output (Y^{pot}) is estimated from log gross domestic product (in chained 2000 dollars) using a quadratic trend. As described in Section 2, we include the anticipated growth rate of government spending in order to soak up any forecastable changes in government spending. For $\Delta g_{t|t-1}^F$, we combine Greenbook and SPF quarterly forecasts following Auerbach and Gorodnichenko (2012) and extending their dataset so that our sample covers 1966q1-2014q4.

Figure 2 plots the impulse responses estimated using a VAR with 4 lags (dashed black line) and a VMA-FAIR model with 1 Gaussian basis function (thick line) where we allow for a linear trend for each variable.^{16,17} The error bands cover 90 percent of the posterior probability. The upper panel plots the impulse responses to a positive shock to G, while the lower panel plots the impulse responses to a negative shock to G.

When comparing impulse responses to positive and negative shocks, it is important to keep in mind that the impulse responses to negative shocks were multiplied by -1 in order to ease comparison across impulse responses. With this convention, when there is no asymmetry, the impulse responses are identical in the top panel (responses to an expansionary shock) and in the bottom panels (responses to a contractionary shock). Finally, the magnitude of the fiscal shock is chosen to generate a peak effect on government spending of 1 (in absolute value) in order to facilitate the interpretation of the results.

The results show that the impulses responses are strongly asymmetric:

Starting with the left panels, the thick blue line depicts the response of G to a positive spending shock (an expansionary shock), while the red line depicts the shock to a negative spending shock (a contractionary shock). The responses to positive and negative shocks are similar although the response to a negative shock appears slightly more persistent.

Turning to the response of output, we can see that the impulse response of output is strong following a contractionary G shock but is not significantly different from zero following an expansionary G shock.

The strong asymmetric responses of Y imply strong asymmetries in the spending multiplier. As shown in Table 1, the “sum” multiplier to a spending contraction is $m^- = 1.25$ (cumulating the impulse responses over 20 quarters), while the expansionary multiplier is $m^+ = 0.27$. In the appendix, we report the cumulative multiplier at shorter horizon and find with similar asymmetries. To assess the statistical significance of our result, the upper-panel of Figure 4 plots the posterior distribution of the multiplier following expansionary spending shocks (x-

¹⁶The loose priors for the FAIR parameters are detailed in the Appendix. To determine the appropriate number of basis functions, we use posterior odds ratios to compare models with increasing number of basis functions. We select the model with the highest posterior odds ratio. This approach can be seen as analogous to the choice of the number of lags in VAR models using Bayesian Information Criteria.

¹⁷Since the estimation of a structural moving-average model requires that the structural shocks do not have permanent effects on the variables of interest, we include a linear trend to capture the non-stationary behavior of the variables. While we re-scaled all variables by potential output (which makes output stationary by construction), the other variables need not be stationary. In particular, we show in the Appendix that government spending (as a ratio of potential output) displayed substantial secular movements since 1966. Such strong secular movements are likely unrelated to transitory movements in government spending, but they can substantially distort the impulse responses functions. The linear trend avoids that issue.

axis) and following contractionary shocks (y-axis). Evidence for asymmetry is strong with a 0.99 posterior probability that $m^- > m^+$.¹⁸

Figure 2 shows that the response of taxes is not behind the asymmetric size of the multiplier. While the response of taxes is not different from zero following an expansionary shock, taxes declined markedly following a contractionary shock (recall that the impulse responses to contractionary shocks are multiplied by -1). Thus, the tax response should make the adverse effect of contractionary fiscal policy on output smaller, not larger.

3.3 Results from a narrative identification scheme

We now turn to Ramey’s narrative identification scheme, and we explore the asymmetry of the multiplier following unexpected changes in anticipated future defense expenditures. We estimate impulse response functions from a SUR-FAIR model with 1 Gaussian basis function using quarterly data over 1939-2014.¹⁹

Figure 3 plots the impulse responses of government spending and output to news shocks, and Table 1 reports the corresponding sizes of the multiplier. Again the impulse responses and the size of the multiplier differ markedly between expansionary and contractionary shocks. The multiplier following a positive news shock is lower than 1 with $m^+ = 0.47$, but the multiplier following a negative shock is above one with $m^- = 1.56$. These results confirm our previous findings based on a recursive identification scheme. To assess the statistical significance of our result, the bottom-panel of Figure 4 plots the posterior distribution of the multiplier following expansionary spending shocks (x-axis) and following contractionary shocks (y-axis). Again, the evidence in favor of asymmetry is strong, as the posterior probability that $m^- > m^+$ is above 0.99.

4 Robustness

In this section, we examine the robustness of our findings of an asymmetric spending multiplier. We consider the robustness of our results to three important aspects of our approach: (i) the sample period, (ii) the FAIR methodology, and (iii) the definition of the multiplier.

¹⁸Another way to evaluate the significance of our results is to use Bayesian model comparison. The asymmetric FAIR model displays marginal data densities that are substantially larger than the marginal data density of a corresponding Bayesian VAR with loose, but proper, Normal-Whishart priors.

¹⁹We do not include a time trend in the model, since the impulse response estimates are consistent even without stationary data. Moreover, our VAR modeling of the residual \mathbf{u}_t will already capture any secular behavior in the variables of interest, and adding a time trend gives very similar results.

1. Sample period: 1947-2014 or 1890-2014 We consider two alternative sample periods. First, we consider the effect of government spending over 1947-2014. Since World War II was a highly unusual period (with severe capacity constraints and rationing, see e.g., Ramey and Zubairy, 2016), the lessons learned from this episode may not be representative of the effect of government spending in recent times. For that reason, the post-WW2 period may be the most relevant to estimate the size of the multiplier in a modern economy. Second, we make full use of the 1890-2014 historical data compiled by Ramey and Zubairy (2016), keeping in mind the limitations associated with the use of historical data. In particular, as highlighted by Gorodnichenko (2014) the historical sample period includes periods with important regime changes, variation in data quality (Romer, 1986) and secular structural changes (notably a trend in the size and composition of government spending).²⁰

2. Methodology: Local Projections instead of FAIR Since our approach relies on the parametrization of the impulse response functions with Gaussian basis functions, we examine the robustness of our results to this parametrization. Specifically, we will not rely on functional approximation of the impulse responses but instead use Local Projections (LP) which impose no structure on the impulse response functions and are thus more robust to mis-specification (although at the expense of efficiency). There is an important drawback to such an LP-based approach however: in the case of an asymmetric data-generating process, LP requires a series of previously identified structural shocks to estimate structural impulse responses.²¹ While this is not a problem when using (independently identified) narrative Ramey news shocks, we cannot use a recursive identifying restriction in a LP to assess the asymmetric size of the multiplier. However, since our aim is only to assess the robustness of our findings, we will take a short-cut and use as spending shocks the structural spending shocks from a (linear) VAR a la Blanchard-Perotti (2004). While such a hybrid VAR-LP procedure is flawed (in fact, not internally consistent since the VAR shocks are identified under the assumption that the DGP is linear), we see it as a useful robustness check of our results based on FAIR.

²⁰Since the Auerbach and Gorodnichenko (2012) recursive identification scheme requires data on professional forecasts that are not available prior to 1966, we will implement the recursive identification scheme over 1947-2014 and 1890-2014 using the simpler Blanchard-Perotti identification scheme (keeping in mind the caveat associated with this identification assumption (Ramey, 2011)).

²¹It is possible to directly impose recursive identifying assumptions (i.e., identify structural shocks) in Local Projections by including the right set of contemporaneous and lagged observables as controls and thus to directly obtain *structural* impulse responses from the LP estimates (e.g., Barnichon and Brownlees, 2017). However, this approach does not work if the data generating process is asymmetric. In that case, the system does not have an autoregressive representation (as we discussed in Section 2), and a structural shock cannot be written as a *linear* combination of contemporaneous and lagged observables.

3. The response of private spending

There is some disagreement on the best way to measure the multiplier; for instance whether to consider the impact multiplier as in Auerbach and Gorodnichenko (2012) or the “sum” multiplier as Ramey and Zubairy (2016). Even in the case of the “sum” multiplier, one must decide on the horizon K over which one integrates the impulse response function. We thus consider an alternative way to get at the size of the multiplier, and we study the response of private spending to a government spending shock, as in Ramey (2012): A decrease in private spending following a positive G shock indicates that government spending crowds-out private spending, i.e., the multiplier is below one, whereas an increase in private spending indicates crowding-in, i.e., the multiplier is above one.

In the interest of space, we will present the results from two main specifications that capture the robustness of our results to points 1. to 3.

4.1 Using Local Projections over 1947-2014

First, we focus on our preferred 1947-2014 post-WW2 sample and use Local Projections to estimate the impulse responses of private spending (GDP less government spending) to a government spending shock. An additional advantage of this sample period is the availability of data on Consumption and Investment, which allows us to explore the response of the different components of private spending.

Results from a narrative identification scheme

We start by using the Ramey news shocks in Local Projections, and we estimate the impulse responses of government spending and GDP to positive vs. negative news shock.

To have a benchmark, we first consider the linear case without asymmetry. To estimate the impulse responses, we run linear Local Projections with Instrument Variables (IV), i.e. we estimate $K + 1$ equations

$$y_{t+k} = \alpha_k + \beta_k g_t + \gamma'_k x_t + u_{t+k}, \quad k = 0, 1, \dots, K \quad (9)$$

where y_{t+k} is the variable of interest (government spending or GDP), g_t is government spending at time t that we instrument with the series of news shocks $\{\hat{\varepsilon}_t^G\}$, and x_t contains lags of y_t , and g_t as well as a quadratic trend. We include a polynomial trend to capture the non-stationary

behavior of g_t , although we obtain very similar results when we do not include any trend (see the Appendix).

As discussed in Mertens and Ravn (2013) and Ramey and Zubairy (2016), an IV approach has the advantage of allowing for measurement error in both the shock and the instrumented variable (as long as their errors are uncorrelated), which is especially important when using historical data. The impulse response of y_t is then given by $\beta_0, \beta_1, \dots, \beta_K$. We use a horizon of $K = 20$ quarters, and we report Newey-West (1987) standard errors to allow for autocorrelation in the error terms.

To allow for asymmetric effects of government spending shocks, we proceed as in the linear case except that we use as instrument either $\left\{ \hat{\varepsilon}_t^G \mathbb{1}_{\hat{\varepsilon}_t^G > 0} \right\}$ to get the effect of expansionary shocks or $\left\{ \hat{\varepsilon}_t^G \mathbb{1}_{\hat{\varepsilon}_t^G < 0} \right\}$ to get the effect of contractionary shocks.

Figures 5 plot the impulse responses of government spending (G), private spending ($Y - G$), investment (I) and consumption (C). When comparing impulse responses to positive and negative shocks, keep in mind that the impulse responses to negative shocks were multiplied by -1 in order to ease comparison across impulse responses. With this convention, when there is no asymmetry, the impulse responses are identical in the left-hand panels (responses to a positive shock) and in the right-hand panels (responses to a negative shock).

Figure 5 shows that private spending is crowded-out (i.e., decreases) following an expansionary G shock, but private spending is *not* crowded-in (i.e., does not increase) following a contractionary G shock.²² In other words, the multiplier is below 1 for an expansionary shock but is above one for a contractionary shock, in line with our previous results.

Results from a recursive identification scheme

To use LP to estimate the asymmetric effects of spending shocks identified with a recursive identification scheme, we proceed in two steps. First, we estimate a standard structural VAR with $(g_t, \tau_t, y_t)'$ to identify structural shocks to government spending, denoted $\{\tilde{\varepsilon}_t^G\}$. Second, we take $\{\tilde{\varepsilon}_t^G\}$ as our series of structural shocks, and we estimate the local projections (9) as with the Ramey news shocks. Again, recall that such a hybrid VAR-LP procedure is flawed but nonetheless a useful robustness check of our FAIR results.

²²Note the strong similarity between the impulse responses to a positive shock and the impulse response estimated with a linear model (Figure 5). This result owes to the fact that a few large positive shocks dominate the sample of Ramey news shocks and thus have a strong influence on the linear impulse response estimate. We come back to this point in Section 6.

Figure 6 plots the estimated impulse responses and confirm our previous findings: private spending decreases following an expansionary G shock, but private spending does *not* increase following a contractionary G shock. Looking at the components of private spending, an interesting pattern emerges: a contractionary G shock lowers private spending mostly by lowering consumption,²³ whereas an expansionary G shock lowers private spending mostly by crowding-out investment.

4.2 Using Local Projections over 1890-2014

In the second robustness check, we estimate the size of the multiplier m using Local Projections with historical data over 1890-2014.²⁴

To obtain the multiplier associated with a news shock, we follow Ramey and Zubairy (2016) and directly estimate the “sum” multiplier using again an IV approach by estimating the following $K + 1$ linear Local Projections

$$\sum_{j=0}^k y_{t+j} = \alpha_k + m_k \sum_{j=0}^k g_{t+j} + \gamma'_k x_t + u_{t+k}, \quad k = 0, 1, \dots, K \quad (10)$$

using $\hat{\varepsilon}_t^G$ as an instrument for $\sum_{j=0}^k g_{t+j}$. Here, $\sum_{j=0}^k y_{t+j}$ is the sum of the GDP variable from t to $t + k$ and $\sum_{j=0}^k g_{t+j}$ is the sum of the government spending variable from t to $t + k$, and x_t contains four lags of y_t , and g_t as well as a quartic trend. We include a polynomial trend to capture the non-stationary behavior of g_t over 1890-2014 (plotted in the Appendix).

In (10), the coefficient m_k is directly the “sum” multiplier over the first k periods, and the associated standard errors can be readily estimated using Newey-West.

As instruments we use either the Ramey and Zubairy (2016) news shocks or the Blanchard and Perrotti (2002) spending shocks identified as in the previous robustness section with a standard structural VAR with $(g_t, \tau_t, y_t)'$. Table 2 reports the estimated multipliers and Figures 7 and 8 plot the corresponding impulse responses. Overall, the results are very similar to the results obtained with FAIR models over the more recent period: the multiplier is above 1 for a contractionary shock but is below 1 for an expansionary shock.

²³The asymmetric response of consumption is important since a key channel through which fiscal policy can have asymmetric effects is through asymmetry in the MPC to transitory shocks. We come back to this point in our theoretical discussion in Section 7.

²⁴Since data on C and I are not available pre-1947, we do not consider the response of private spending and instead measure the multiplier as in our baseline results.

5 Additional evidence

In this section, we provide additional support for our findings of an asymmetric multiplier by considering two additional approaches to analyze the size of the multiplier: (a) Jorda and Taylor (JT, 2016) and (b) Blanchard and Leigh (BL, 2013). This additional evidence is interesting because it relies on entirely different identification schemes than the ones used by Ramey (2011) and Auerbach and Gorodnichenko (2012), and also because JT and BL’s findings exploit cross-country variations in contrast to our study, which relies on time series variation in US data.

5.1 Jorda and Taylor (2016)

An influential literature studies the economic effects of fiscal consolidations by studying the effects of shocks to the cyclically adjusted primary budget balance.²⁵ Such shocks include (but not exclusively) shocks to government spending and thus contain information on the size of the government spending multiplier.

The latest work in that literature is Jorda and Taylor (2016), who consider two different identification schemes –an instrumental variable approach and inverse-propensity score weighting– and consistently find a multiplier that is approximately 2.

This is a larger multiplier than reported in the government spending literature, and yet we think our results are fully consistent with their finding. Indeed, the thing to notice is that Jorda and Taylor (2016) only study the effects of fiscal consolidations. As a result, their estimated multiplier is that of a contractionary multiplier, which we also find to be large. In light of our findings, it is also natural that Jorda and Taylor find larger spending multiplier than in the rest of the literature whose evidence is based on a mix of positive and negative shocks.

5.2 Blanchard and Leigh (2013)

Blanchard and Leigh (BL, 2013) analyze the size of the multiplier from a very different angle. Using a panel of EU countries over 2009-2012, BL regress the forecast error of real GDP growth on forecasts of fiscal adjustments. Under rational expectations, and assuming that forecasters use the correct model of forecasting, the coefficient on the fiscal adjustment forecast should be zero. However, BL find that there is a significant relation between fiscal adjustment forecasts and subsequent growth forecast errors, which indicates that the size of the multiplier was under-

²⁵Alesina and Ardagna (2010), Guajardo, Leigh, and Pescatori (2011) and Jorda and Taylor (2016).

estimated during the last recession. Moreover, the magnitude of the under-estimation is large: if forecasters had in mind a multiplier of about 0.5, BL’s estimates imply that the multiplier was 1.6 during 2009-2012.

BL’s approach is an interesting testing ground for our findings. Since we find that only the contractionary multiplier is above one, BL’s results should be driven by fiscal consolidations alone, and not by fiscal expansions. As we show below, this is exactly what we find.

Specifically, BL run the regression

$$\text{Forecast error of } \Delta Y_{i,t+1|t} = \alpha + \beta (\text{Forecast of } \Delta F_{i,t+1|t}) + \varepsilon_{i,t+1} \quad (11)$$

on a cross-section of European countries where $\Delta Y_{i,t+1|t}$ denotes cumulative (year-over-year) growth of real GDP in economy i and the associated forecast error is $\Delta Y_{i,t+1|t} - \widehat{\Delta Y}_{i,t+1|t}$ with $\widehat{\Delta Y}_{i,t+1|t}$ the forecast made with information available at date t , and where $\Delta F_{i,t+1|t}$ denotes the change in the general government structural fiscal balance in percent of potential GDP.

Under the null hypothesis that fiscal multipliers used for forecasting were accurate, the coefficient β should be zero.²⁶ In contrast, a finding that β is negative indicates that forecasters tended to be optimistic regarding the level of growth associated with a fiscal consolidation, i.e., that they under-estimated the size of the multiplier. Using World Economic Outlook (WEO) forecast data, BL find that $\beta \approx -1.1$ for forecasts over 2009-2012, indicating that the multiplier was substantially under-estimated by forecasters, and implying that the multiplier was 1.6 (0.5+1.1) during the recession.²⁷

To test our prediction that BL’s findings is driven by fiscal consolidations, we re-estimate BL’s baseline specification but allowing for different β coefficients depending on the sign of the fiscal adjustment –expansionary or contractionary–. Figure 9 shows the corresponding fitted lines. To avoid confusion, note that a fiscal consolidation in BL’s framework shows up as an *increase* in the fiscal balance and thus shows up as positive entries in Figure 9. We can see that BL’s results are indeed driven by fiscal consolidations. Table 3 presents the regression results. The β associated with fiscal expansions is not different from zero –suggesting an expansionary

²⁶In other words, information known when the forecasts were made should be uncorrelated with subsequent forecast errors.

²⁷BL conduct a number of robustness checks to argue that their non-zero β is symptomatic of an under-estimated multiplier and is not due to other confounding factors. In particular, they verify that their results hold after controlling for other factors that could trigger both planned fiscal adjustments and lower than expected growth, or that the forecast error in fiscal adjustment was not correlated with the initial fiscal adjustment forecast (which would bias β).

multiplier of about 0.5 during the recession–, but the β associated with fiscal consolidations is $\beta_G^- \approx -1.2$ –suggesting a contractionary multiplier of about 1.7–. These results are close to our estimates on the size of the multiplier during recessions.²⁸

A caveat in our analysis so far is that fiscal adjustments include not only changes in government purchases but also changes in revenues. To better map BL’s results with ours, we follow BL and treat separately changes in spending and changes in revenues by running the regression

$$\text{Forecast error of } \Delta Y_{i,t+1|t} = \alpha + \beta_G (\text{Forecast of } \Delta G_{i,t+1|t}) + \beta_T (\text{Forecast of } \Delta T_{i,t+1|t}) + \varepsilon_{i,t+1} \quad (12)$$

where $\Delta G_{i,t+1|t}$ denotes the WEO forecast of the change in structural spending in 2010-11 and $\Delta T_{i,t+1|t}$ denotes the WEO forecast of the change in structural revenue in 2010-11, both in percent of potential GDP.

Column (3) of Table 3 presents the results of regression (12) where we treat separately fiscal consolidations and fiscal expansions. In line with our findings, the only significant coefficient is $\beta_G^- \approx 1.6$,²⁹ corresponding to a contractionary spending multiplier of about 2 in recessions (again in line with our findings), whereas β_G^+ is not significantly different from zero, consistent with an expansionary spending multiplier of about 0.5 in recessions.

6 The asymmetric and state-dependent government spending multiplier

We now explore whether the size of the multiplier depends on the state of the business cycle, and whether the magnitude of such state dependence depends on the sign of the government intervention. We first describe how we introduce state dependence into a FAIR model and then present the estimation results using both identification schemes: (i) the recursive identification scheme à la Auerbach and Gorodnichenko (2012), and (ii) the narrative identification scheme à la Ramey (2011).

²⁸Throughout this exercise, we follow BL in keeping the assumption that forecasters had in mind a multiplier of 0.5.

²⁹The coefficient β_G^- is positive because a fiscal consolidation corresponds to a *decrease* in government spending. In contrast, in columns (1) and (2), β^- is negative because a fiscal consolidation corresponds to an *increase* in the fiscal balance.

6.1 Introducing asymmetry and state-dependence

With asymmetry and state dependence in response to government spending shocks, $\psi_i^+(k)$ –the impulse response function of variable i to a positive government spending shock at horizon k – becomes $\psi_i^+(k, z_{t-k})$, i.e., the impulse response to a positive shock depends also on some indicator variable z_t (and similarly for ψ_i^-).

To allow for state dependence in a parsimonious fashion, we can approximate the impulse response ψ_i^+ with

$$\psi_i^+(k) = a_i^+ (1 + \gamma_i^+ z_{t-k}) e^{-\left(\frac{k-b_i^+}{c_i^+}\right)^2}, \quad \forall k > 0 \quad (13)$$

with γ_i^+ , a_i^+ , b_i^+ and c_i^+ parameters to be estimated. Although we anticipate our empirical application and only state an approximation with one Gaussian basis function, expression (13) can easily be generalized to any number of basis functions. An identical functional form holds for ψ_i^- .

In this model, the amplitude of the impulse response depends on the state of the business cycle (captured by the cyclical indicator z_t) at the time of the shock. In (13), the amplitude of the impulse response is a linear function of the indicator variable z_t . Such a specification will allow us to test whether a positive fiscal shock has a stronger effect on output in a recession than in an expansion.

Note that in specification (13), the state of the cycle is allowed to stretch/contract the impulse response, but the shape of the impulse response is fixed (because a , b and c are all independent of z_t). While one could allow for a more general model in which all variables a , b and c depend on the indicator variable, with limited sample size, it will typically be necessary to impose some structure on the data, and imposing a constant shape for the impulse response is a natural starting point.

6.2 Results from a recursive identification scheme

We estimate model (13), where we use as cyclical indicator (z_t) the unemployment rate detrended by CBO's estimate of the natural rate (available from 1949 on).³⁰

As a preliminary step, and to put our results into perspective, Figure 10 plots our cyclical

³⁰We detrend the unemployment rate to make sure that our results are not driven by slow moving trends (e.g., due to demographics) in the unemployment rate, which could make the unemployment rate a poor indicator of the amount of economic slack (see e.g. Barnichon and Mesters, 2016). Using the actual unemployment rate gives similar qualitative results for state dependence, but a posterior odds ratio calculation favors a model with detrended unemployment.

indicator along with the identified government spending shocks implied by the posterior mode estimates. While the cyclical indicator has zero mean, it is right-skewed, a well-known property of the unemployment rate (e.g., Neftci, 1984). As a result, fiscal shocks are observed over values of (detrended) unemployment ranging mostly from -1 to 2 .

The first row of Figure 11 shows how the “sum” multiplier depends on the state of the business cycle at the time of the shock. The left column reports the multiplier following positive (expansionary) shocks, and the right column reports the multiplier following negative (contractionary) shocks. The bottom panels of Figure 11 plot the histograms of the distributions of respectively contractionary shocks and expansionary shocks over the business cycle. This information is meant to get a sense of the range of (detrended) unemployment over which we identify the coefficients capturing state dependence.

To report the effect of slack under a slightly different angle, Table 4 reports the size of the multiplier in a high unemployment state (detrended unemployment of 2) and in a low unemployment state (detrended unemployment of -1).

We can once more see a stark asymmetry between positive and negative shocks. The multiplier associated with contractionary fiscal shocks depends strongly on the state of the cycle and reaches its highest value in times on high unemployment. Specifically, the contractionary multiplier is about 0.9 around business cycle peaks but gets above 2 around business cycle troughs, and the posterior probability that $m^{-,U \text{ high}} > m^{-,U \text{ low}}$ is high at 0.95 (Table 4).³¹ In contrast, the multiplier associated with expansionary fiscal shocks does not depend significantly or economically on the state of the cycle ($P(m^{+,U \text{ high}} > m^{+,U \text{ low}}) = 0.52$). Overall, m^+ is small and not significantly different from zero regardless of the level of unemployment.

6.3 Results from a narrative identification scheme

We now perform the same exercise but using the Ramey news shocks in the SUR-type FAIR model with asymmetry and state dependence to allow the impulse responses to depend on both the sign of the news shock as well as the state of the cycle (captured by detrended unemployment) at the time of the shock. Since CBO’s natural rate estimate is not available over

³¹Interestingly, these results are consistent with the recent work of Caggiano et al. (2015), who find that state dependence in the size of the multiplier comes from extreme “events”, and in particular deep recessions versus strong expansionary periods. This is what one would expect if the effect of the state of the cycle on the (contractionary) multiplier was close to linear: For small business cycle fluctuations, the size of the multiplier will not vary very much (Figure 11) and its variations will be hard to detect. It is only when the unemployment reaches high levels that the contractionary multiplier can reach values close to 2 and start differing markedly from its level during expansionary times.

1939-2014 (the estimate only starts in 1949), we use as cyclical indicator the unemployment rate detrended with an HP-filter ($\lambda = 10^5$).

Figure 12 presents the results using the same formatting as Figure 11. The state dependence results are similar to the ones obtained with the recursive identification: positive shocks have no state dependent effects on output, –the multiplier remaining around 0.5 regardless of the state of the cycle–, while negative shocks have stronger effects on output during times of slack. And just like with the recursively identified shocks, the contractionary multiplier is about 1 around business cycle peaks but rises to about 2 around business cycle troughs with a posterior probability that $m^{-,U \text{ high}} > m^{-,U \text{ low}}$ of 0.98 (Table 4).

6.4 An explanation for the range of estimates in the literature

The literature has reached seemingly conflicting conclusions on the effect of slack on the size of the multiplier: while studies based on narratively-identified shocks find little evidence for state dependence, VAR-based studies finding strong evidence for state dependence.

Interestingly, the asymmetric nature of the spending multiplier offers a simple possible explanation for this set of results. To see that, note that the estimated *average* multiplier (and its state dependence) depends on the relative frequency of expansionary and contractionary shocks used for estimation. The key is then to note that this relative frequency varies markedly across the two main identification schemes. Figure 13 plots the distribution of Ramey (2011) news shocks along with the distribution of recursively-identified shocks (as in Auerbach and Gorodnichenko, 2012). Unlike with recursively-identified shocks whose distribution is (by construction) evenly distributed between positive and negative shocks, a few very large positive shocks dominate the sample of Ramey news shocks.

Our "composition effect" hypothesis is thus the following. Studies based on Ramey News shocks (Owyang, Ramey and Zubairy 2013, Ramey and Zubairy 2016) find little evidence for state dependence using news shocks to defense spending, because their results are driven predominantly by positive shocks, which (according to our results) display no detectable state dependence. In contrast, studies such as Auerbach and Gorodnichenko (2012) based on a VAR find some evidence for state dependence, because (roughly) half of the identified shocks are negative shocks, which display strong state dependence. Interestingly, and consistent with this "composition effect" hypothesis, Ramey and Zubairy (2016) do find significant evidence of state dependence when they use a recursive identification scheme (in which the distribution between

positive and negative shocks is symmetric).³²

7 Theoretical discussion

In this final section, we discuss some theoretical channels through which a temporary, deficit-financed, increase in government spending can affect output, and we discuss two different channels that could rationalize our empirical findings of $m^- > 1$ and $m^+ < 1$: (i) the existence of financial frictions, and/or (ii) downward nominal rigidities.

To frame the discussion, we start by discussing the main (linear for now) theoretical effects of an increase in government spending financed by future higher lump-sum taxes.

In the textbook Keynesian IS/LM model, the marginal propensity to consume (MPC) out of transitory income is large, so that an increase in government spending that raises household income also raises household consumption. If the central bank does not increase the interest rate too much (so that investment does not decline too much), private spending goes up and the multiplier is above 1.

In the standard neo-classical (RBC) model however, a deficit-financed increase in government spending generates a negative wealth effect for households, who respond by saving more in anticipation of future higher tax hikes (Baxter and King, 1993). With a decline in consumption, the multiplier in RBC models is then typically less than 1.

In the New-Keynesian model, which builds a sticky-price edifice on neoclassical foundations, the multiplier can be above one provided that three assumptions are satisfied (Gali et al., 2007):³³ (i) prices are sticky, (ii) the central bank response to changes in government spending is not too strong, and (iii) household's MPC out of transitory income is large enough. With (iii), the increase in disposable income brought about by higher government spending can compensate the negative wealth effect and thus lead to an increase in household consumption and to a multiplier above one. While Gali et al. (2007) allow for a large MPC out of transitory income by

³²One may wonder whether such a "composition effect" between m^+ and m^- should also imply that the *average* multiplier for government spending shocks –call it m^G (Auerbach and Gorodnichenko, 2012)– is larger than the *average* multiplier for news shocks to defense spending –call it m^{News} (Ramey and Zubairy, 2016). However, m^G and m^{News} refer to different types of government spending (defense purchases only versus all federal, state and local purchases), and news shocks to defense spending have larger multipliers (for both m^+ and m^-) than shocks to overall government spending (see Table 1 or Table 2). Thus, while the distribution of news shocks does make the average Ramey multiplier m^{News} smaller (closer to its m^+ value), this effect is not enough to compensate the fact that $m^{+,News} > m^{+,G}$ and $m^{-,News} > m^{-,G}$. As a result, we find $m^{News} > m^G$ in Table 1 and 2 (as in Ramey and Zubairy, 2016).

³³The discussion of New-Keynesian models with government spending is not meant to be exhaustive, and other mechanisms can generate a multiplier above 1 (see e.g., Kormilitsina and Zubairy, 2016). The goal of the discussion is to highlight simple channels that can lead to an asymmetric multiplier.

assuming the existence of rule-of-thumb consumers (who behave "hand-to-mouth" by consuming all of their disposable income), their assumption is motivated by the existence of financial frictions and by the fact that a sizable fraction of households have close to zero liquid wealth and face high borrowing costs (Kaplan et al., 2014).³⁴

7.1 Financial frictions

The existence of financial frictions can lead to an asymmetric multiplier, because borrowing constraints can make the MPC asymmetric. Specifically, with financial constraints the MPC out of temporary income changes can be higher for negative income shocks than for positive income shocks, because borrowing constraints impede households' ability to bring future consumption forward, but do not prevent households from postponing consumption.³⁵ Going back to Gali et al. (2007)'s New-Keynesian framework, this would imply that the multiplier is larger following declines in government spending than following increases in spending, consistent with our findings.

Interestingly, Bunn et al. (2017) and Christelis et al. (2017) recently found such evidence of asymmetry in the MPC with households reporting changing their consumption by significantly more following temporary unanticipated falls in income than following rises of the same size. For instance, Bunn et al. (2017) estimate an average MPC of only 0.1 following a positive income shock but of about 0.6 following a negative income shock.³⁶ Such an asymmetric MPC is promising to explain our findings that $m^- > 1$ and $m^+ < 1$ as well as the asymmetric responses of consumption to government spending shocks: With a substantial MPC out of negative transitory income shocks but a close to zero MPC out of positive income shocks, consumption could behave asymmetrically; (i) decreasing following a contractionary government spending shock (the economy behaving in a Keynesian fashion where the fall in disposable income dominates the positive wealth effect) but (ii) not increasing (possibly even declining) following an expansionary government spending shock (the economy behaving in a neo-classical fashion where the negative wealth effect dominates). This is exactly what we found in Section 3.5.

³⁴Wealthier individuals can also behave in an hand-to-mouth fashion –holding low liquid assets despite sizeable illiquid assets– (Kaplan, et al., 2014).

³⁵See Christelis et al. (2017) for a quantitative discussion of how liquidity constraints (as well as prudence and a precautionary saving motive) can generate a higher MPC out of negative shocks than out of positive shocks. See also Bunn et al. (2017).

³⁶Moreover, households more likely to face liquidity shortages or liquidity constraints report even higher MPC to adverse income shocks.

Another channel through which financial frictions and government spending shocks can interact is the extensive margin of borrowing constraints. By affecting disposable income, a government spending shock can affect the *share* of households that are financially constrained and thus affect the *average* MPC. Interestingly, this extensive margin channel has the potential of not only generating some sign-dependence in the spending multiplier,³⁷ but also of explaining our finding that the contractionary multiplier is largest in recessions: In recessions, the share of households facing borrowing constraints is larger, which implies an even larger *average* MPC out of negative income shocks and thus an even larger contractionary multiplier.

Taking stock, this discussion highlights how a better understanding of the effects of financial frictions on the MPC (and its asymmetry) is likely to be an important part of future research on the size of the multiplier and on the effects of fiscal policy.

7.2 Downward nominal rigidities

Another possibility for $m^- > m^+$ is the existence of downward nominal rigidities, or more generally asymmetric nominal rigidities (e.g., Kahn, 1997), where prices adjust more easily upwards than downwards. With asymmetric nominal rigidities, the economy can behave in a more "Keynesian" fashion following a decrease in government spending (implying a larger multiplier, possibly above 1) but behave in a more "classical" fashion following an increase in government spending (implying a smaller multiplier).³⁸

8 Conclusion

This paper estimates the asymmetric effects of shocks to government spending by using Gaussian basis functions to approximate impulse response functions. Using either of the two main identification schemes in the literature –recursive or narrative–, we find that the multiplier is above 1 for contractionary shocks to government spending, but below 1 for expansionary shocks. The multiplier for contractionary shocks is largest in recessions, but the multiplier for

³⁷A positive government spending shock could bring some households off the constraint, leading them to behave in a Ricardian fashion and thereby making the multiplier smaller. In contrast, a negative government spending shock could push more households into the constraint and force them to reduce consumption, implying a larger multiplier.

³⁸An alternative mechanism involving wage rigidity (and possibly asymmetric multipliers) can be found in Alesina, Ardagna, Perotti and Schiantarelli (2002). In their model, an increase in government spending can lead to wage pressures which hurt investment by the private sector. With downward wage rigidity, a decrease in government spending would not lower wages and thus would not stimulate investment, which could lead to a larger contractionary multiplier.

expansionary shocks is always below 1 and not larger in recessions.

Our results have two interesting policy implications. First, they strongly weaken the case for fiscal packages to stimulate the economy. Second, they caution that austerity measures may have a much higher output cost than suggested by linear estimates.

One promising avenue to explain the asymmetric size of the multiplier lies in the asymmetric size of the MPC out of transitory income changes (Bunn et al., 2017, Christelis et al., 2017), and we conclude that a better understanding of the effects of financial frictions on the (asymmetric) size of the MPC should be an important part of the research agenda on the size of the multiplier and the effects of fiscal policy. While there is, as far as we know, little work on the non-linear implications of financial frictions on the size of the spending multiplier,³⁹ Brunnermeier and Sannikov (2014) recently showed that financial constraints can lead to highly nonlinear dynamics in the economy's response to shocks, notably asymmetric and state dependent impulse-responses. The model of Brunnermeier-Sannikov does not have nominal rigidities and only explore the effects of real shocks, but such non-linear features are also likely to be present with government spending shocks. Relatedly, the recent Heterogeneous Agents New-Keynesian (HANK) models with a non-trivial share of hand-to-mouths agents (Kaplan, Moll and Violante, 2016) may offer a promising framework to explore asymmetric MPCs and asymmetric effects of fiscal shocks.

³⁹See Fernandez-Villaverde (2010) for an exploration of the *linear* effects of financial frictions on the multiplier.

References

- [1] Alesina, A., and S. Ardagna. "Large Changes in Fiscal Policy: Taxes versus Spending," In *Tax Policy and the Economy*, edited by Jeffrey R. Brown, vol. 24. Chicago: University of Chicago Press, pp. 35–68, 2010
- [2] Alesina A, S Ardagna, R Perotti and F Schiantarelli, "Fiscal Policy, Profits, and Investment," *American Economic Review*, vol. 92(3), pages 571-589, 2002
- [3] Almon, S. "The distributed lag between capital appropriations and expenditures," *Econometrica*, 33, January, 178-196, 1965
- [4] Auerbach A and Y Gorodnichenko. "Measuring the Output Responses to Fiscal Policy," *American Economic Journal: Economic Policy*, vol. 4(2), pages 1-27, 2012
- [5] Auerbach A and Y Gorodnichenko. "Fiscal Multipliers in Recession and Expansion." In *Fiscal Policy After the Financial Crisis*, pp. 63–98, University of Chicago Press, 2013
- [6] Barnichon R, and G. Mesters, "On the Demographic Adjustment of Unemployment," *Review of Economics and Statistics*, forthcoming, 2016
- [7] Barnichon R. and C. Matthes. "Functional Approximations of Impulse Responses: New Insights into the Asymmetric Effects of Monetary Policy," Working Paper, 2017
- [8] Barnichon R. and C. Brownlees. "Impulse Response Estimation By Smooth Local Projections," Working Paper, 2017
- [9] Blanchard O. and D. Leigh, "Growth Forecast Errors and Fiscal Multipliers," *American Economic Review*, vol. 103(3), pages 117-20, May 2013.
- [10] Blanchard, O., and R. Perotti. "An Empirical Characterization of the Dynamic Effects of Changes in Government Spending and Taxes on Output." *Quarterly Journal of Economics* 117 (4): 1329–68, 2002
- [11] Bunn P., J. Le Roux, K. Reinold and P. Surico "The Consumption Response to Positive and Negative Income Shocks," CEPR Working Paper DP No. 11829, 2017
- [12] Caggiano, G., E. Castelnuovo, V., Colombo, and G. Nodari, "Estimating Fiscal Multipliers: News from a Nonlinear World," *Economic Journal*, 125(584), 746–776, 2015

- [13] Caldara F. and C. Kamps, "The analytics of SVARs: a unified framework to measure fiscal multipliers," *The Review of Economic Studies*, Forthcoming, 2017
- [14] Christelis D., D Georgarakos, T. Jappelli, L. Pistaferri and M. van Rooij, "Asymmetric Consumption Effects of Transitory Income Shocks," CSEF Working Papers 467, Centre for Studies in Economics and Finance (CSEF), 2017
- [15] Fazzari, Steven M., James Morley, and Irina Panovska, 2015. "State-dependent effects of fiscal policy." *Studies in Nonlinear Dynamics & Econometrics* 19(3): 285–315
- [16] Fernández-Villaverde, J. "Fiscal Policy in a Model with Financial Frictions." *American Economic Review*, 100(2): 35-40, 2010
- [17] Gali, J., D. Lopez-Salido, and J. Valles, "Understanding the Effects of Government Spending on Consumption," *Journal of the European Economic Association*, 5: 227-270, 2007
- [18] Gordon, R. and R. Krenn. "The End of the Great Depression: VAR Insight on the Roles of Monetary and Fiscal Policy," NBER Working Paper 16380, 2010
- [19] Gorodnichenko, Y. Discussion of "Government Spending Multipliers in Good Times and in Bad: Evidence from U.S. Historical Data," by Ramey and Zubairy, EFG meeting of the NBER Summer Institute, July 2014
- [20] Guajardo, Jaime, Daniel Leigh, and Andrea Pescatori. "Expansionary Austerity: New International Evidence" IMF Working Paper 11/158, 2014
- [21] Jorda O., "Estimation and Inference of Impulse Responses by Local Projections," *American Economic Review*, pages 161-182, March 2005
- [22] Jorda O. and A. Taylor. "The Time for Austerity: Estimating the Average Treatment Effect of Fiscal Policy" *Economic Journal*, 126(590), 219-255, 2016
- [23] Hastie, T., R. Tibshirani and J. Friedman, *The Elements of Statistical Learning*, Springer 2009.
- [24] Kahn, S., "Evidence of Nominal Wage Stickiness from Microdata," *American Economic Review*, Vol. 87, No. 5. (Dec., 1997), pp. 993-1008, 1997
- [25] Kaplan, G., and G. Violante. "A Model of the Consumption Response to Fiscal Stimulus Payments." *Econometrica*, 82(4): 1199–1239, 2004

- [26] Kaplan, G, Moll, B and Violante, G. “Monetary Policy According to HANK”, NBER Working Paper No 21897, 2016
- [27] Kormilitsina A. and Zubairy, S. “Propagation Mechanisms for Government Spending Shocks: A Bayesian Comparison”, Working Paper, 2016
- [28] Mertens K. and M. Ravn. ”Measuring the Impact of Fiscal Policy in the Face of Anticipation: A Structural VAR Approach,” *Economic Journal*, Volume 120, Issue 544, pages 393–413, May 2010
- [29] Mertens K. and M. Ravn. ”The Dynamic Effects of Personal and Corporate Income Tax Changes in the United States,” *American Economic Review*, American Economic Association, vol. 103(4), pages 1212-1247, June.2013
- [30] Mountford, A. and H. Uhlig, “What are the Effects of Fiscal Policy Shocks?” *Journal of Applied Econometrics* 24: 960–992, 2009
- [31] Neftci, S. “Are Economic Time Series Asymmetric over the Business Cycle?,” *Journal of Political Economy*, 92, 307-28, 1984
- [32] Newey, W. and K. West. “A Simple, Positive Semi-definite, Heteroskedasticity and Autocorrelation Consistent Covariance Matrix.” *Econometrica* 55(3): 703–08, 1987
- [33] Owyang, M., V. Ramey and S. Zubairy. ”Are Government Spending Multipliers Greater During Periods of Slack? Evidence from 20th Century Historical Data” *American Economic Review Papers and Proceedings*, May 2013
- [34] Parker, J. ”On Measuring the Effects of Fiscal Policy in Recessions,” *Journal of Economic Literature*, American Economic Association, vol. 49(3), pages 703-18, September, 2011
- [35] Perotti, R. ”In Search of the Transmission Mechanism of Fiscal Policy,” *NBER Macroeconomics Annual*, Volume 22, 2008
- [36] Plagborg-Moller, P. ”Bayesian Inference on Structural Impulse Response Functions,” Working Paper, 2016.
- [37] Ramey, V. ”Can Government Purchases Stimulate the Economy?,” *Journal of Economic Literature*, vol. 49(3), pages 673-85, 2011

- [38] Ramey V. “Identifying Government Spending Shocks: It’s All in the Timing,” *Quarterly Journal of Economics* 126, 1-50, 2011
- [39] Ramey, V. ”Government Spending and Private Activity,” NBER Chapters, in: *Fiscal Policy after the Financial Crisis*, pages 19-55, 2012
- [40] Ramey V. Comment on ”Roads to Prosperity or Bridges to Nowhere? Theory and Evidence on the Impact of Public Infrastructure Investment”, *NBER Macroeconomics Annual*, Volume 27, pages 147-153, 2012
- [41] Ramey V. ”Macroeconomic Shocks and Their Propagation,” *Handbook of Macroeconomics*, Forthcoming, 2016
- [42] Ramey, V. and M. Shapiro, “Costly Capital Reallocation and the Effects of Government Spending,” *Carnegie Rochester Conference on Public Policy*, 1998
- [43] Ramey V. and S. Zubairy. ”Government Spending Multipliers in Good Times and in Bad: Evidence from U.S. Historical Data ,” *Journal of Political Economy*, Forthcoming, 2016
- [44] Riera-Crichton, D. C. Vegh, G. Vuletin, ”Procyclical and countercyclical fiscal multipliers: Evidence from OECD countries,” *Journal of International Money and Finance*, Volume 52, Pages 15-31, 2015
- [45] Robert, C. and G. Casella *Monte Carlo Statistical Methods* Springer, 2004
- [46] Romer, C., “Is the Stabilization of the Postwar Economy a Figment of the Data?,” *American Economic Review*, vol. 76(3), pages 314-334, June 1986
- [47] Romer, C., “The Prewar Business Cycle Reconsidered: New Estimates of Gross National Product, 1869-1908”, *Journal of Political Economy* 97(1), 1–37, 1989
- [48] Stock, J and M. Watson “Identification and Estimation of Dynamic Causal Effects in Macroeconomics”, NBER Working Paper 2018
- [49] Uhlig, H., “Some Fiscal Calculus.” *American Economic Review* 100(2): 30–34, 2010

FAIR, 1 Gaussian

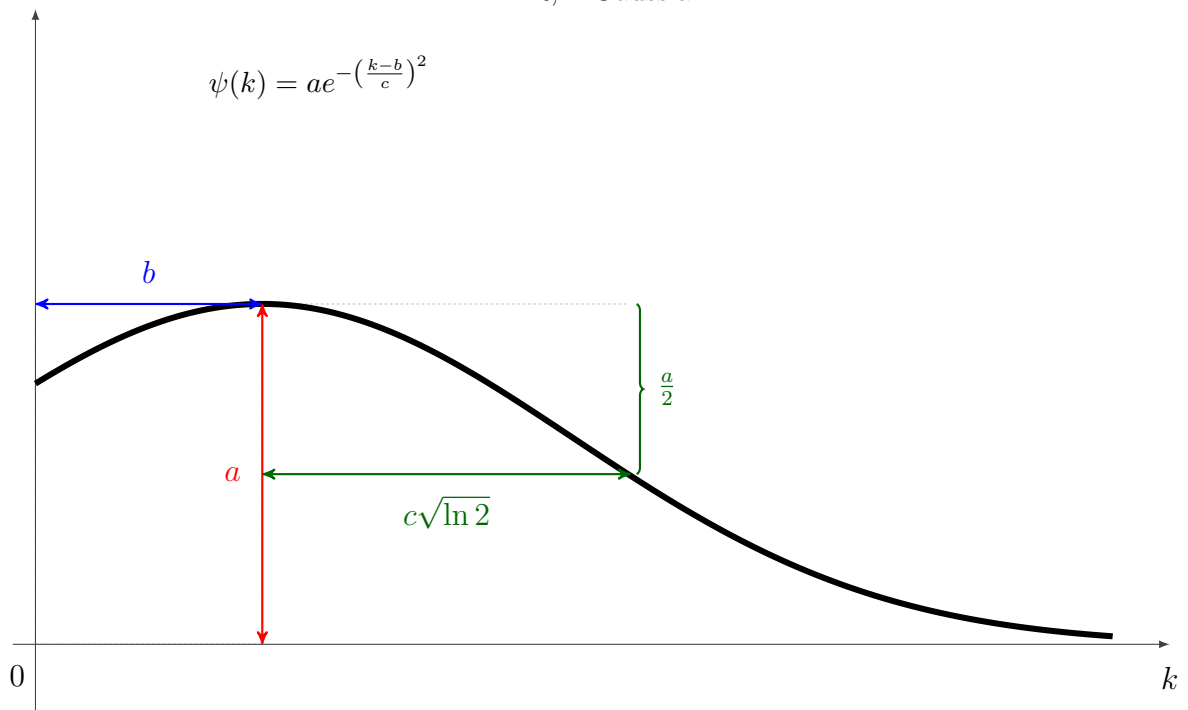


Figure 1: **Functional Approximation of Impulse Responses (FAIR)** with one Gaussian basis function.

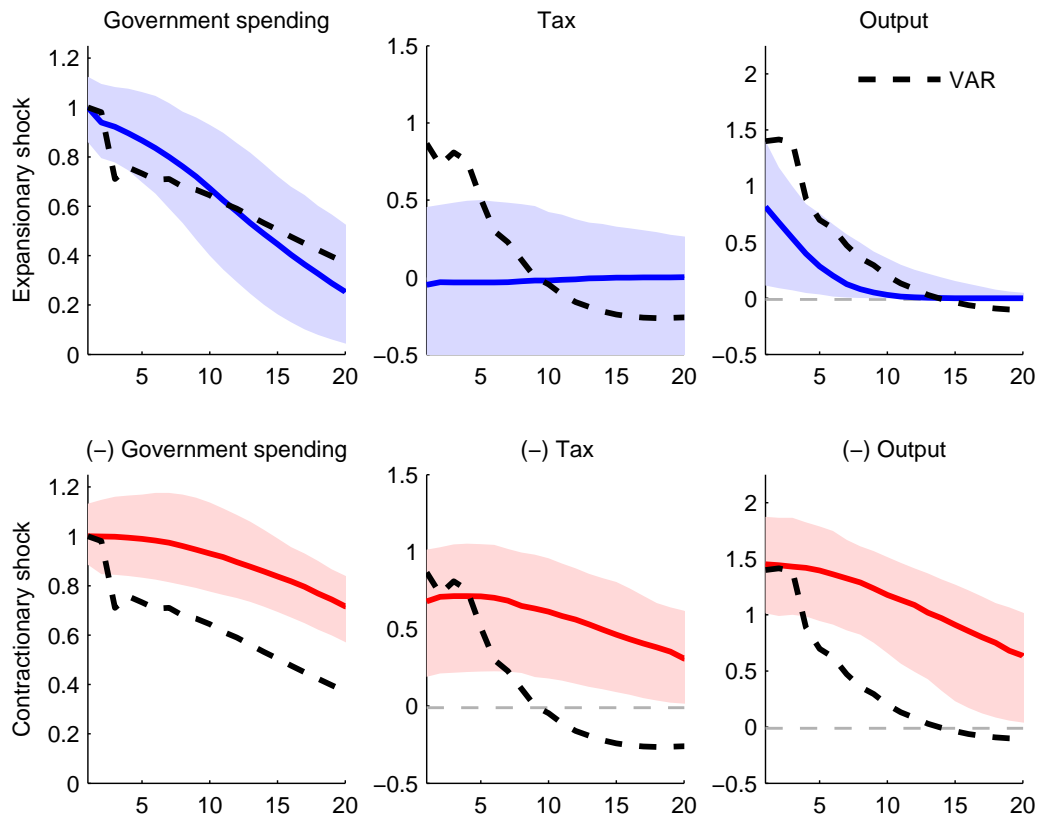


Figure 2: **Recursive identification scheme, VMA-FAIR, 1966-2014.** Impulse response functions (in percent) of government spending, government revenue ("Tax") and output to a government spending shock identified from a timing restriction. Estimation from a standard VAR (dashed-line) or from a VMA-FAIR with one Gaussian basis function (plain line). The thin lines cover 90% of the posterior probability. For ease of comparison between the top and bottom panels, the responses to a contractory shock are multiplied by -1 in the bottom panels.

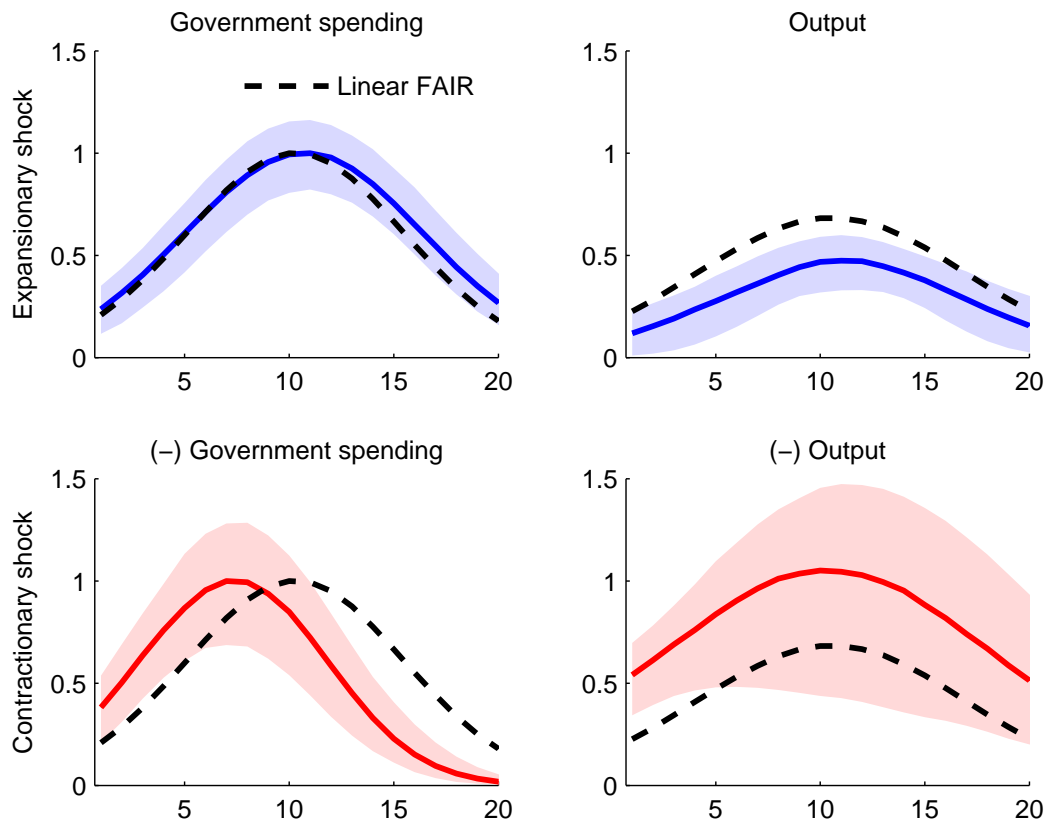


Figure 3: **Narrative identification scheme, SUR-FAIR, 1939-2014.** Impulse response functions (in percent) of Government spending and Output to a Ramey news shock identified from a narrative approach. Estimation from a linear (i.e., symmetric) SUR-FAIR model (dashed-line) or from an asymmetric SUR-FAIR model with one Gaussian basis function (plain line). The thin lines cover 90% of the posterior probability. For ease of comparison between the top and bottom panels, the responses to a contractionary shock are multiplied by -1 in the bottom panels.

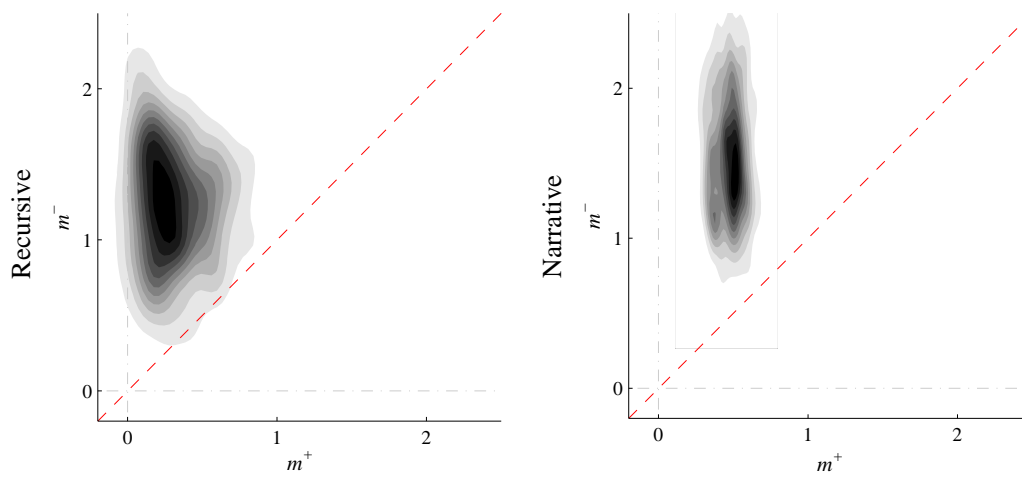


Figure 4: Posterior distribution of the “sum” government spending multiplier for expansionary spending shocks (m^+ , x-axis) and contractionary spending shocks (m^- , y-axis). Estimation using a recursive identification scheme over 1966-2014 (top panel) or a narrative identification scheme with Ramey news shocks over 1939-2014 (bottom panel). The dashed red line marks the symmetric case; with equal multipliers for expansionary and contractionary shocks. The “sum” multiplier is calculated over the first 20 quarters after the shock.

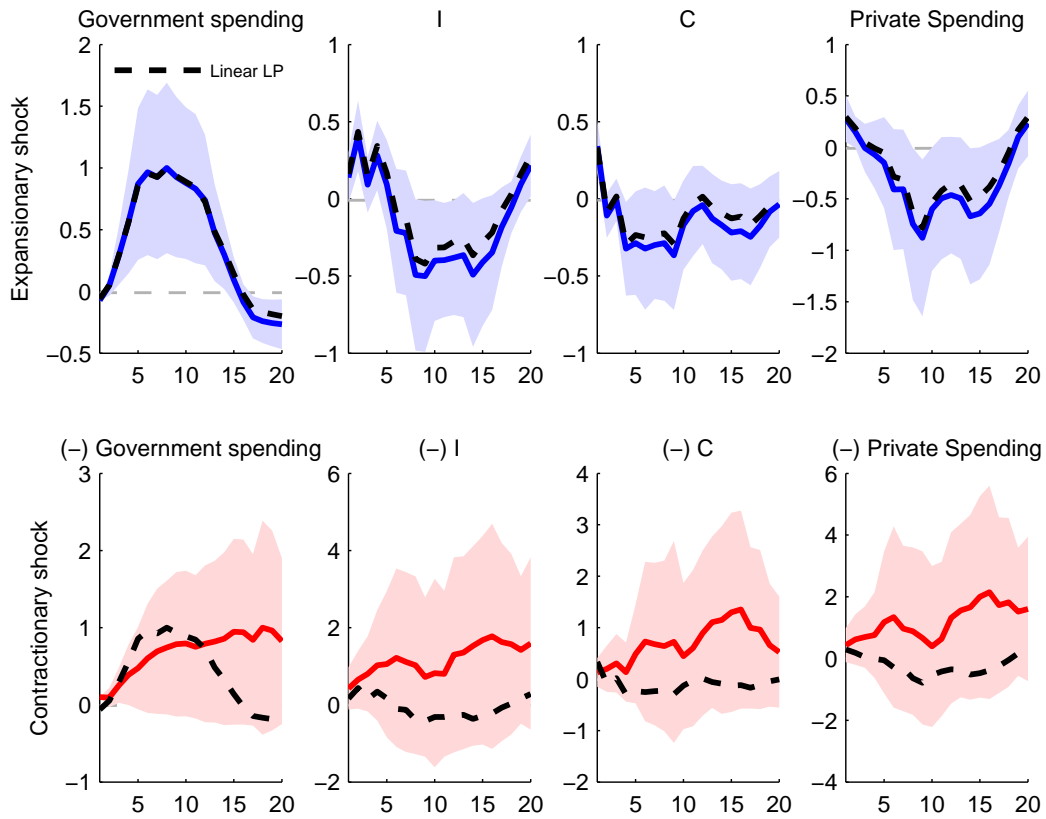


Figure 5: **Narrative identification scheme, Local Projections, 1947-2014.** Impulse response functions (in percent) of Government spending, Investment (I), and Consumption (C) following an expansive Ramey news shock (left panel) and a contractive Ramey news shock (right panel). Estimates from Local Projections. The dashed lines report the point estimates from a linear (i.e., symmetric) model. For ease of comparison between the left and right panels, the responses to a contractive shock are multiplied by -1 in the right panels. The shaded areas are the 90 percent confidence bands calculated using Newey-West standard errors.

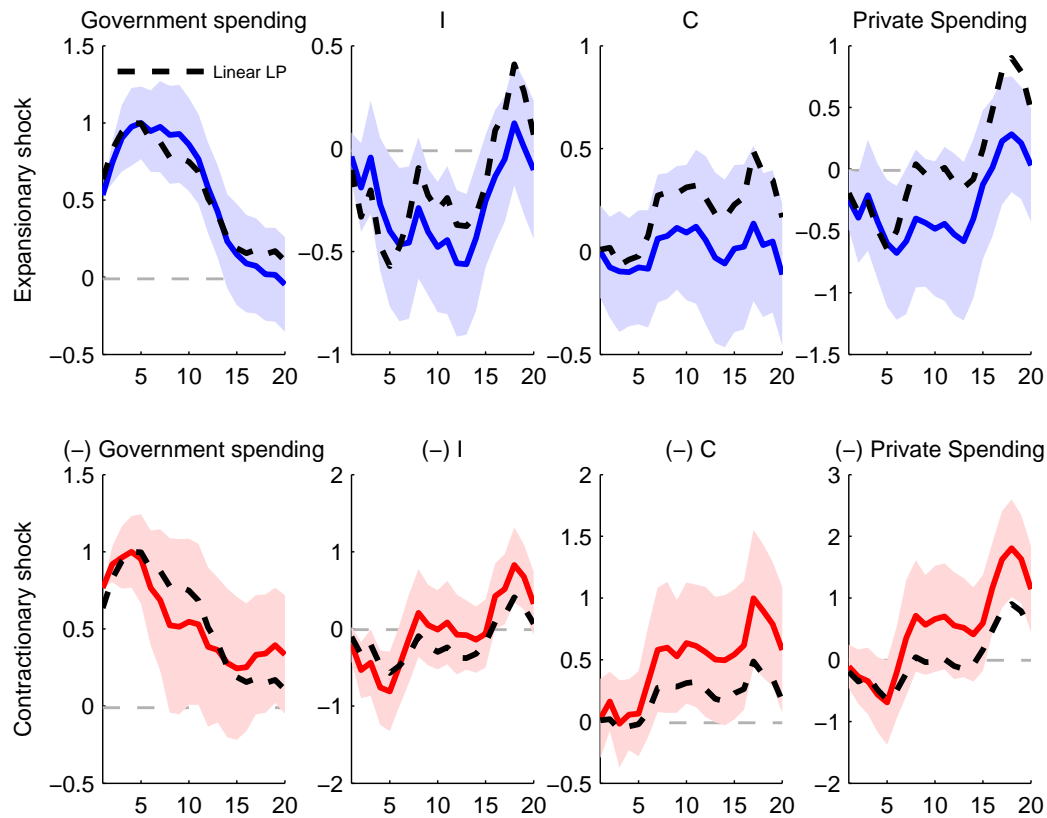


Figure 6: **Recursive identification scheme, Local Projections, 1947-2014.** Impulse response functions (in percent) of Government spending, Investment (I) and Consumption (C) following an expansionary government spending shock (left panel) and a contractionary shock (right panel). The dashed lines report the point estimates from a linear (i.e., symmetric) model. For ease of comparison between the left and right panels, the responses to a contractionary shock are multiplied by -1 in the right panels. The shaded areas are the 90 percent confidence bands calculated using Newey-West standard errors.

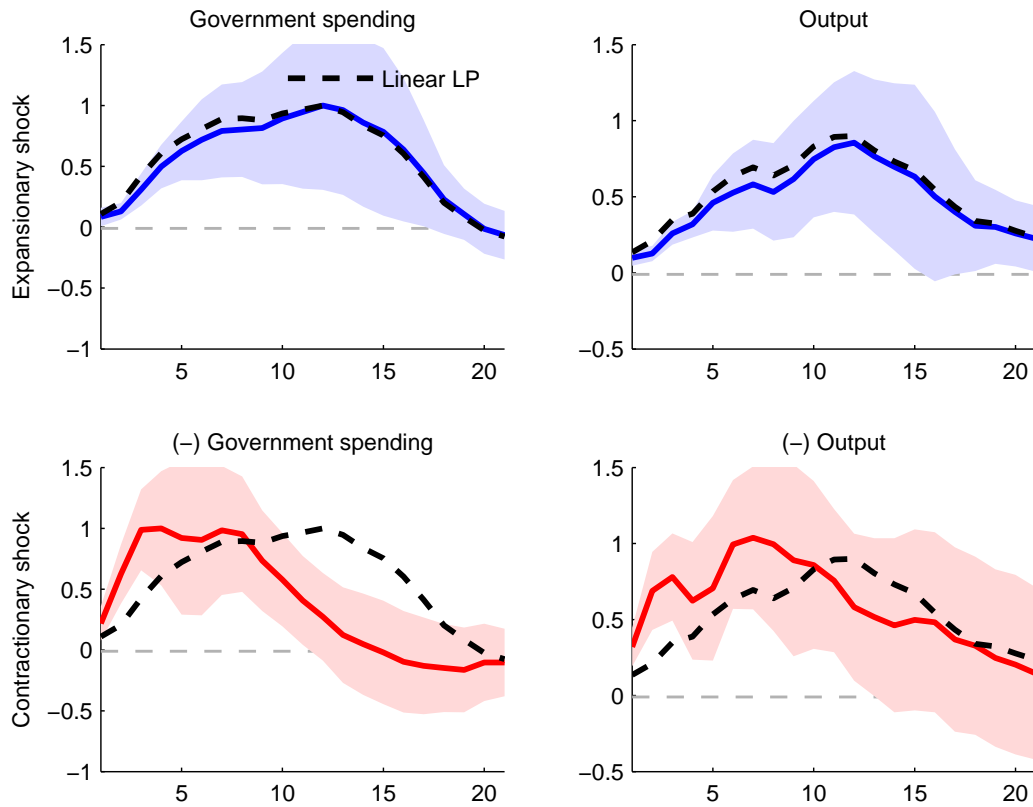


Figure 7: **Narrative identification scheme, Local Projections, 1890-2014.** Impulse response functions (in percent) of Government spending and Output to a Ramey news shock. Estimates from Local Projections. The dashed lines report the point estimates from a linear (i.e., symmetric) model. For ease of comparison between the top and bottom panels, the responses to a contractionary shock are multiplied by -1 in the bottom panels. The shaded areas are the 90 percent confidence bands calculated using Newey-West standard errors.

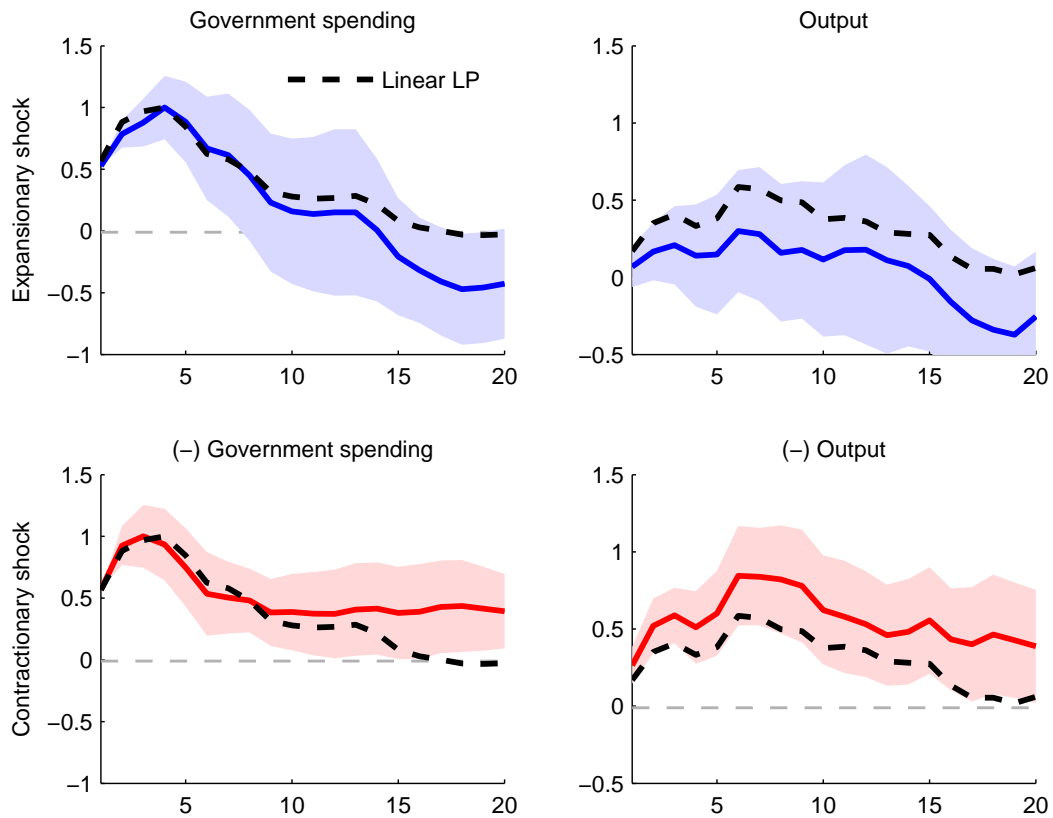


Figure 8: **Recursive identification scheme, Local Projections, 1890-2014.** Impulse response functions (in percent) of Government spending and Output to a government spending shock. Estimates from Local Projections. The dashed lines report the point estimates from a linear (i.e., symmetric) model. For ease of comparison between the top and bottom panels, the responses to a contractionary shock are multiplied by -1 in the bottom panels. The shaded areas are the 90 percent confidence bands calculated using Newey-West standard errors.

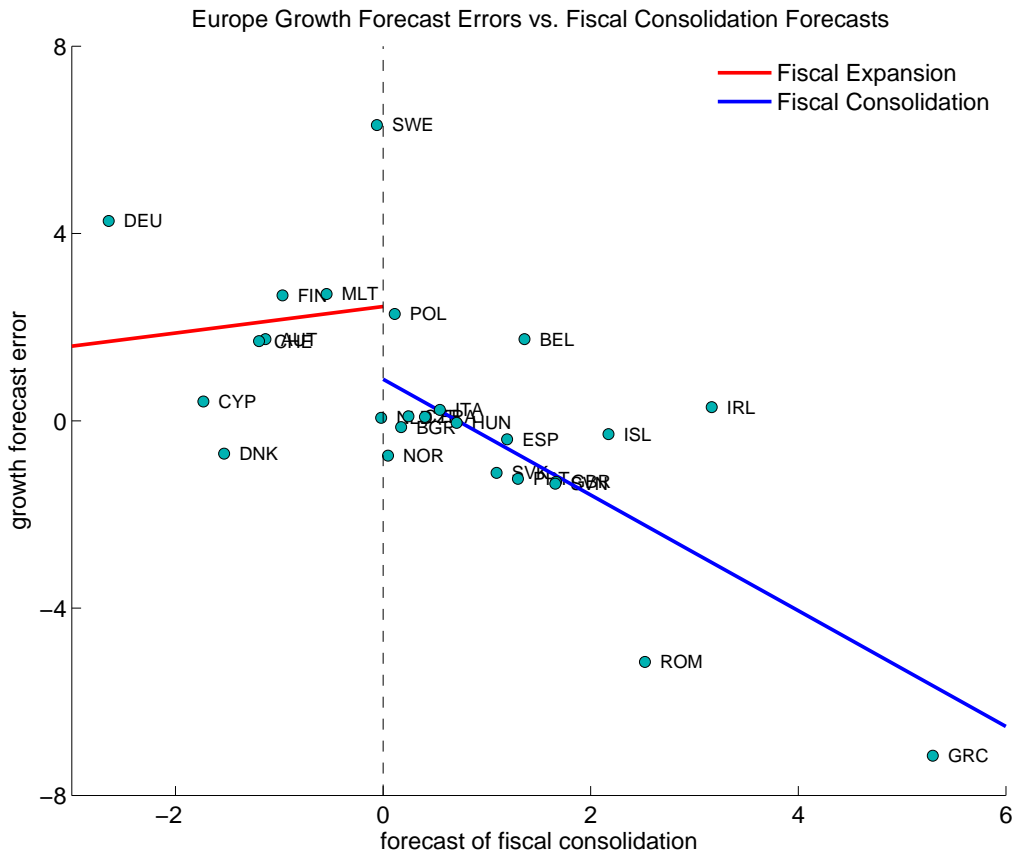


Figure 9: **Blanchard and Leigh (2013) approach:** Regression of forecast error for real GDP growth in 2010 and 2011 relative to forecasts made in the spring of 2010 on forecasts of fiscal consolidation for 2010 and 2011 made in spring of year 2010. The lines depict the regression lines for respectively fiscal consolidation (increase in budget surplus, blue line) and fiscal expansion (decrease in budget surplus, red line). Note that a fiscal consolidation corresponds to an *increase* in the fiscal balance and thus enters as a *positive* entry on the x-axis.

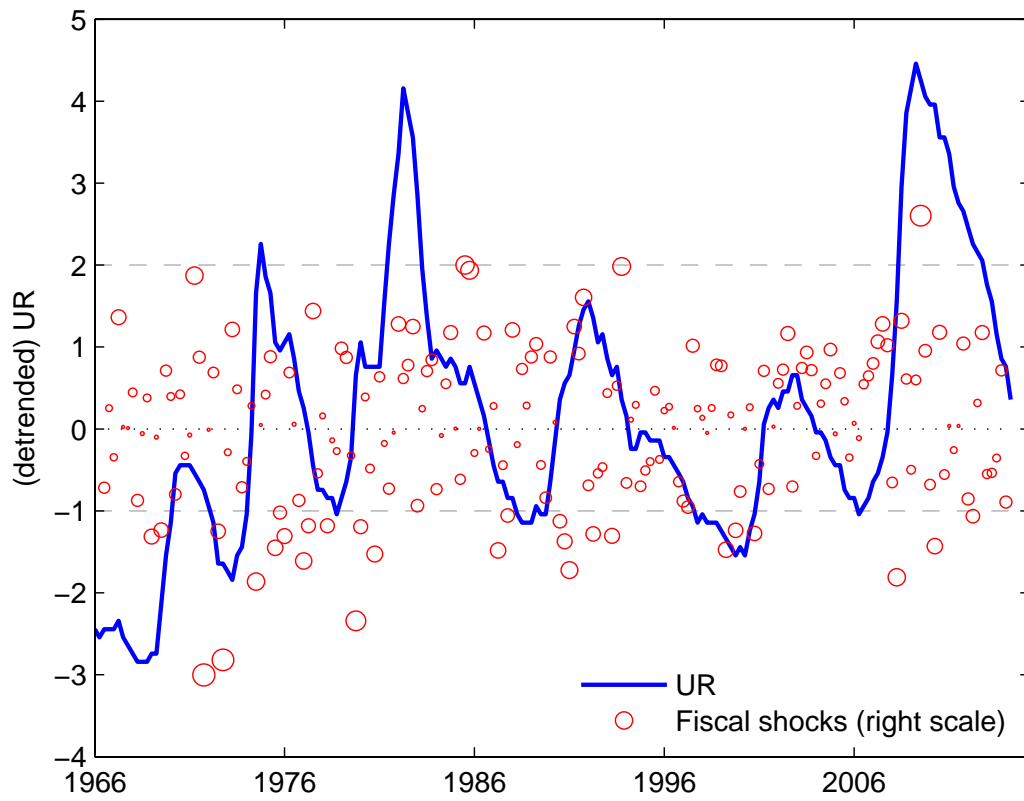


Figure 10: The business cycle indicator –the unemployment rate detrended with CBO’s natural rate estimate– (solid line, left scale)–, and government spending shocks identified from a recursive ordering (circles, right scale) with larger circles indicating larger shocks.

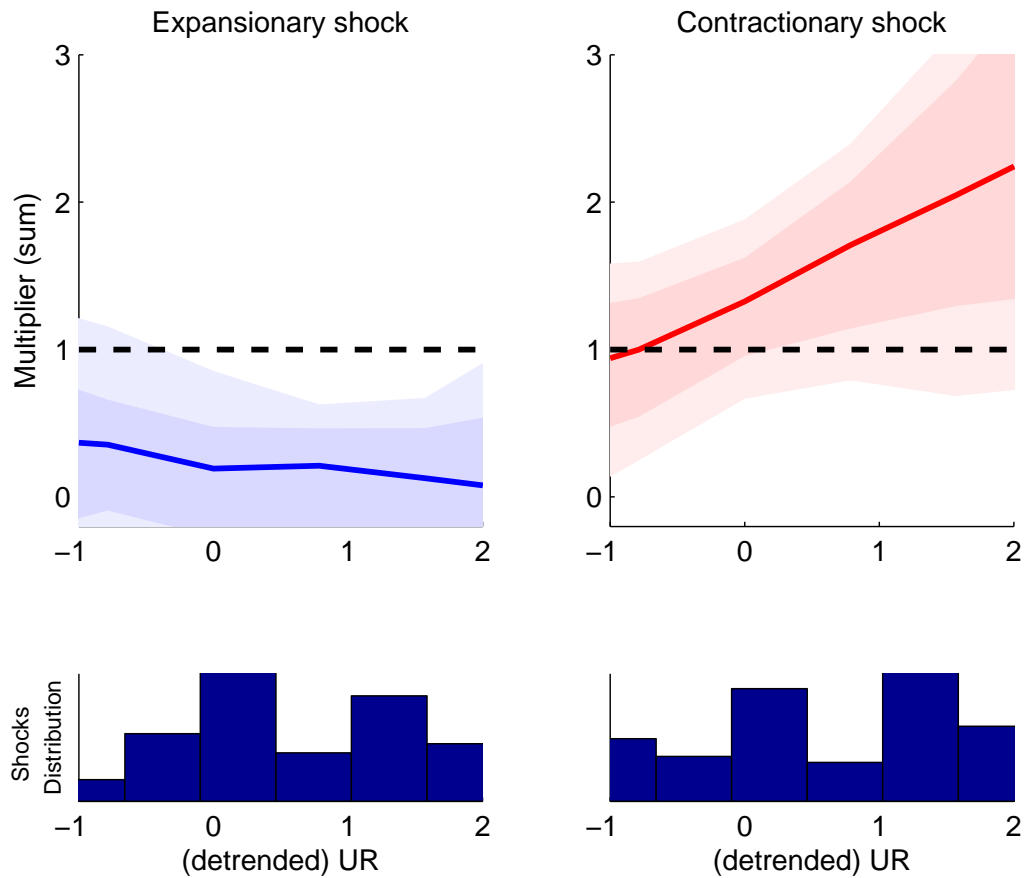


Figure 11: **Recursive identification scheme, VMA-FAIR, 1966-2014.** Size of the “sum” multiplier as a function of the state of the business cycle (measured with detrended unemployment) for expansionary government spending shocks (left panel) and contractionary government spending shocks (right panel). The shaded areas respectively cover 68 and 90 percent of the posterior probability. The bottom panels plot the distributions of (respectively) contractionary shocks and expansionary shocks over the business cycle.

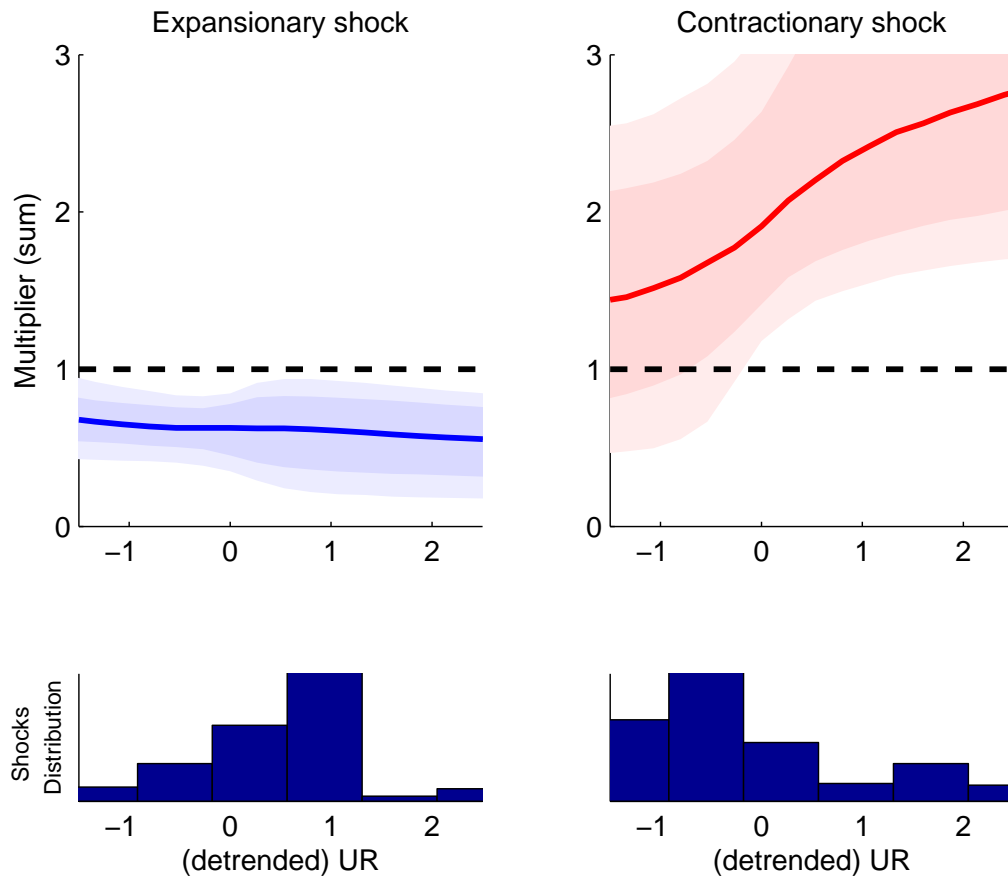


Figure 12: **Narrative identification scheme, SUR-FAIR, 1939-2014.** Size of the “sum” multiplier as a function of the state of the business cycle (measured with detrended unemployment) for expansionary Ramey news shocks (left panel) and contractionary Ramey news shocks (right panel). The shaded areas respectively cover 68 and 90 percent of the posterior probability. The bottom panel plots the distribution of (respectively) contractionary shocks and expansionary shocks over the business cycle.

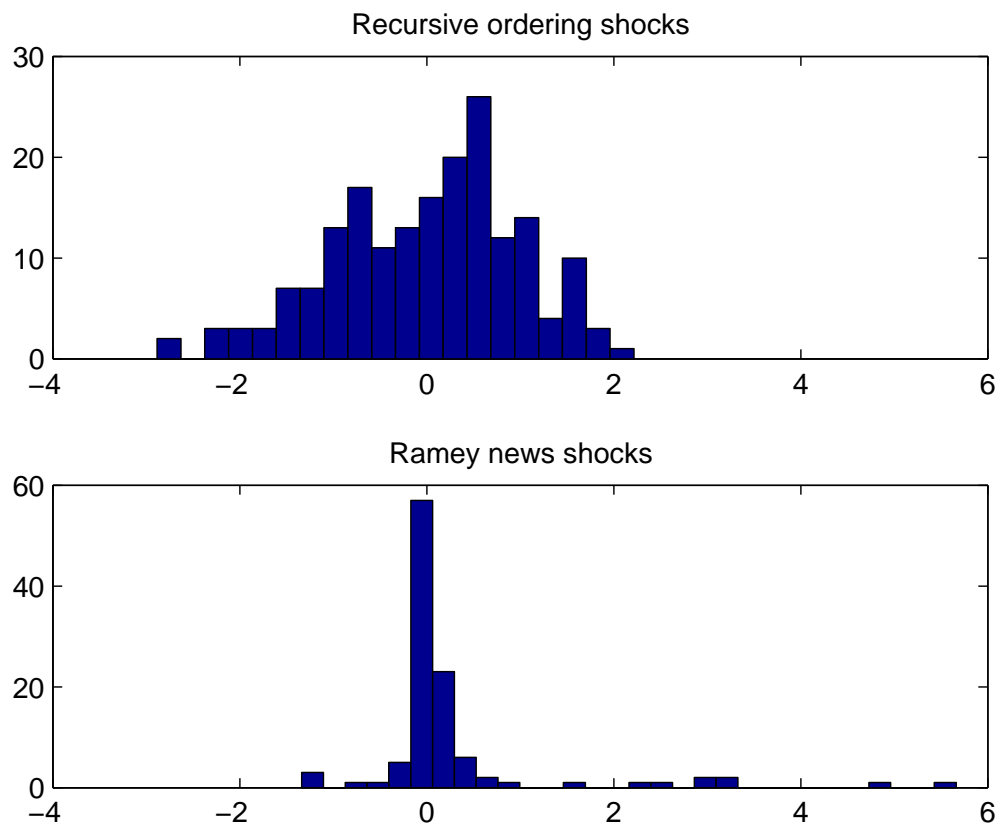


Figure 13: Histograms of the distributions of government spending shocks (rescaled by their standard-deviation). The upper-panel depicts the distribution of shocks recovered from a recursive ordering (1966-2014), the bottom-panel depicts the distribution of Ramey news shocks (1939-2014).

Table 1: Asymmetric government spending multipliers, FAIR estimates

“Sum” multiplier, 5 year integral			
	Linear	Expansionary shock	Contractionary shock
AG shocks 1966-2014	0.58 (0.2--1.0)	0.27 (0.0--0.6)	1.25 (0.7--1.8)
P($m^- > m^+$)		P=0.99***	
Ramey News shocks 1939-2014	0.73 (0.6--0.8)	0.47 (0.3--0.6)	1.56 (1.0--2.3)
P($m^- > m^+$)		P>0.99***	

Note: The "sum" multiplier is calculated by cumulating the impulse responses over the first 20 quarters. Estimates from FAIR models with 1 Gaussian basis function. Numbers in parenthesis cover 90% of the marginal posterior probability. AG shocks refer to shocks obtained as in Auerbach and Gorodnichenlo (2012) from a Blanchard-Perotti recursive identification scheme augmented with professional forecasts of government spending. Ramey news shocks are the unexpected changes in anticipated future expenditures constructed by Ramey (2011). P($m^- > m^+$) reports the posterior probability that the contractionary multiplier m^- is larger than the expansionary multiplier m^+ . "****" denote a posterior probability above 0.99.

**Table 2: Robustness check:
Asymmetric government spending multipliers, Local Projections, 1890-2014**

“Sum” multiplier, 5 year integral			
	Linear	Expansionary shock	Contractionary shock
BP shocks 1890-2014	0.60 (0.08)	0.15 (0.22)	1.00 (0.17)
Ramey News shocks 1890-2014	0.92 (0.08)	0.88 (0.07)	1.50 (0.38)

Note: Numbers in parenthesis denote the Newey-West standard errors. BP shocks refer to shocks obtained as in Blanchard and Perotti (2002). Ramey news shocks are the unexpected changes in anticipated future expenditures constructed by Ramey and Zubairy (2016). The "sum" multiplier is calculated by taking the integrals of the impulse responses over the first 20 quarters.

Table 3: Blanchard-Leigh-type regressions

Forecast error of $\Delta Y_{i,t|t+1} = \alpha + \beta \text{Forecast of } \Delta F_{i,t|t+1} + \varepsilon_{i,t|t+1}$

Specification	(1)	(2)	(3)
β	-1.09*** (.25)		
β^+		0.28 (.81)	
β^-		-1.23*** (.34)	
β_G^+			-0.46 (.78)
β_G^-			1.66*** (.80)
β_T^+			-0.15 (.58)
β_T^-			-0.95 (.67)
Obs	26	26	26
R ²	.49	.56	.60

Note: Data from Blanchard-Leigh (2013). The table reports estimates and heteroskedasticity-robust standard errors in parentheses. ***, **, and * denote statistical significance at the 1, 5, and 10 level, respectively. Equation (1) reports the results of estimating the baseline specification of Blanchard-Leigh (equation (15) in the main text), equation (2) allows for separate β s depending on the sign of the planned fiscal adjustment ΔF : β^+ is the coefficient for fiscal expansions (decrease in budget surplus); β^- is the coefficient for fiscal consolidations (increase in budget surplus); equation (3) reports the results of estimating equation (16) in the main text but allowing for separate β s depending on the sign of the planned spending adjustment ΔG or planned revenue adjustment ΔT : β_G^+ is the coefficient for fiscal expansions (increase in government spending); β_G^- is the coefficient for fiscal consolidations (decrease in government spending) and similarly for β_T^- and β_T^+ but for revenues.

Table 4: Asymmetric multipliers and labor market slack, FAIR estimates

"Sum" multiplier 5 year integral	Expansionary shock		Contractionary shock	
	U low	U high	U low	U high
AG shocks 1966-2014 $P(m^{U \text{ high}} > m^{U \text{ low}})$	0.3	0.1	0.9	2.1
	P=0.52		P=0.95**	
Ramey News shocks 1939-2014 $P(m^{U \text{ high}} > m^{U \text{ low}})$	0.6	0.5	1.5	2.7
	P=0.35		P=0.98**	

Note: The "sum" multiplier is calculated by cumulating the impulse responses over the first 20 quarters. Estimates from FAIR models with 1 Gaussian basis function. AG shocks refer to shocks obtained as in Auerbach and Gorodnichenlo (2012) from a Blanchard-Perotti recursive identification scheme augmented with professional forecasts of government spending. Ramey news shocks are the unexpected changes in anticipated future expenditures constructed by Ramey (2011). $P(m^{U \text{ high}} > m^{U \text{ low}})$ reports the posterior probability that the multiplier m is larger in state of high unemployment (detrended unemployment of +2) than in a state of low unemployment (detrended unemployment of -1). "**" denotes a posterior probability above 0.95.